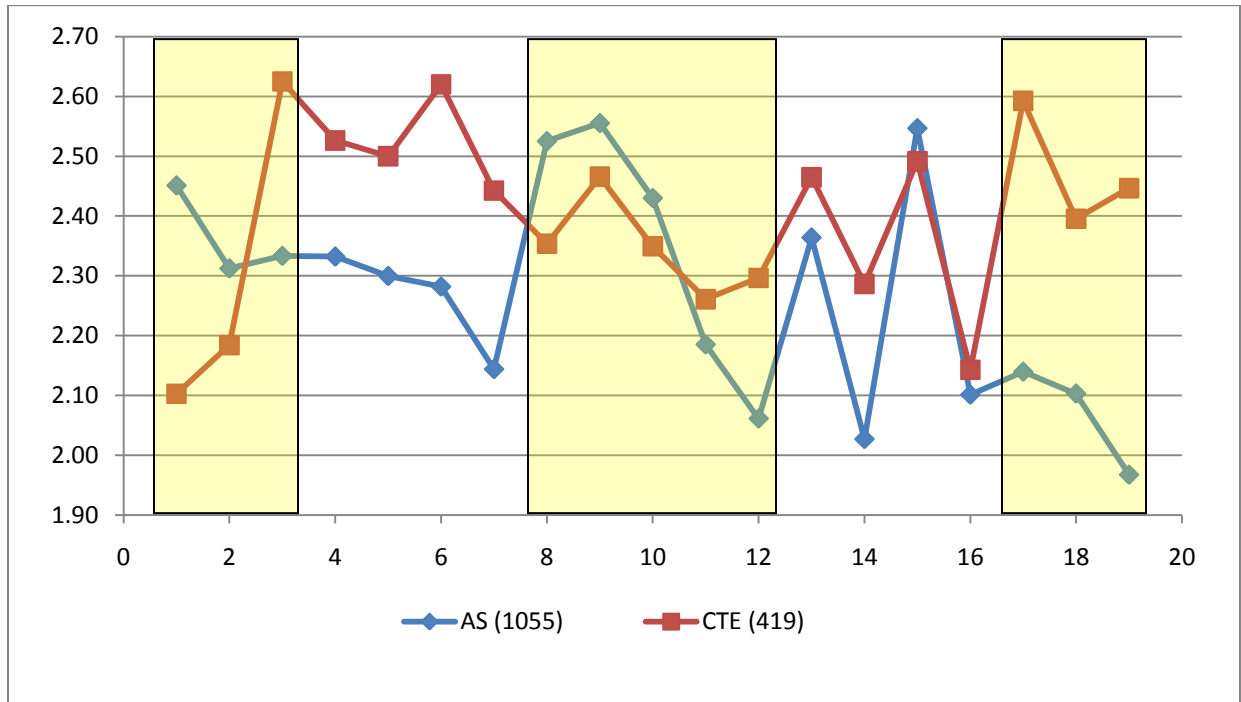


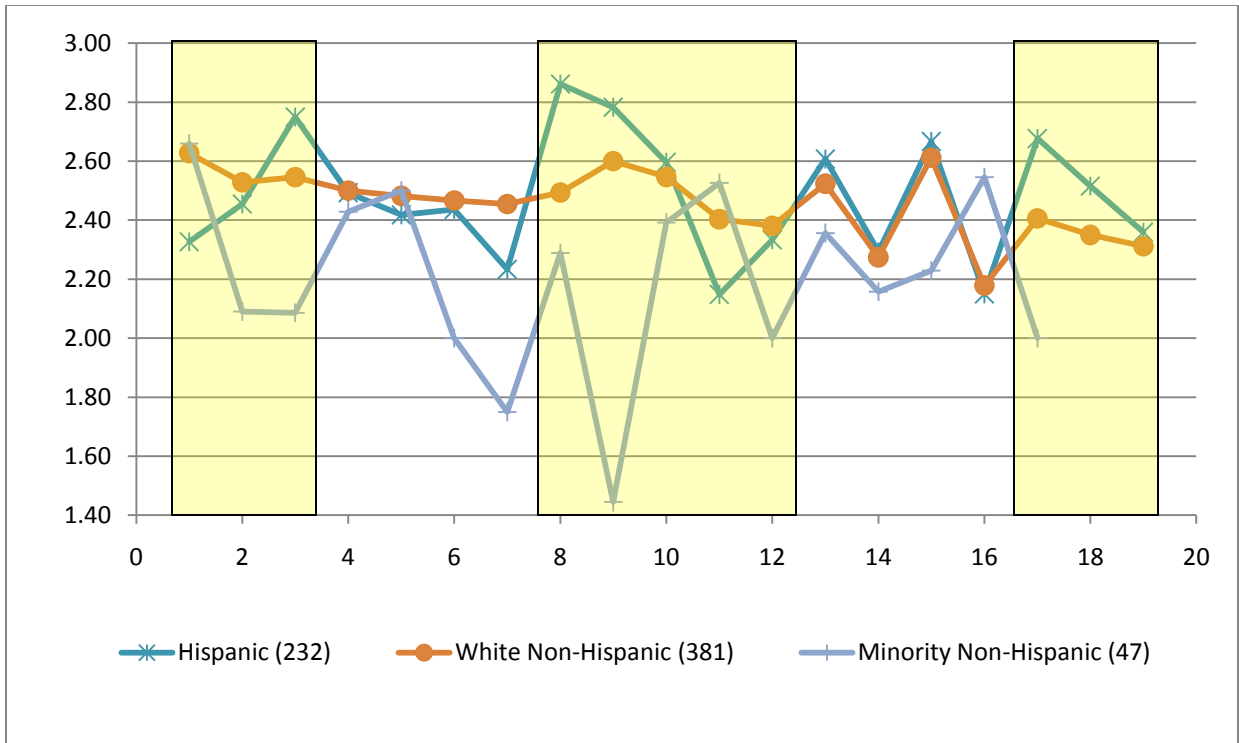
The graphs below represent average scores on the various GenEd Objective assessments written by the faculty during Spring and Fall of '09. Each of the nineteen (19) objectives are plotted on the abscissa (horizontal axis) as:

- |       |                         |  |
|-------|-------------------------|--|
| 1-3   | GenEd Objectives 1a- 1c | Read & comprehend college level work           |
| 4-7   | GenEd Objectives 2a-2d  | Explain and defend ideas orally and in writing |
| 8-12  | GenEd Objectives 3a-3e  | Examine ideas using critical reasoning         |
| 13-16 | GenEd Objectives 4a-4d  | Solve problems using logic, math ..            |
| 17-19 | GenEd Objectives 5a-5c  | Demonstrate responsible citizenship            |

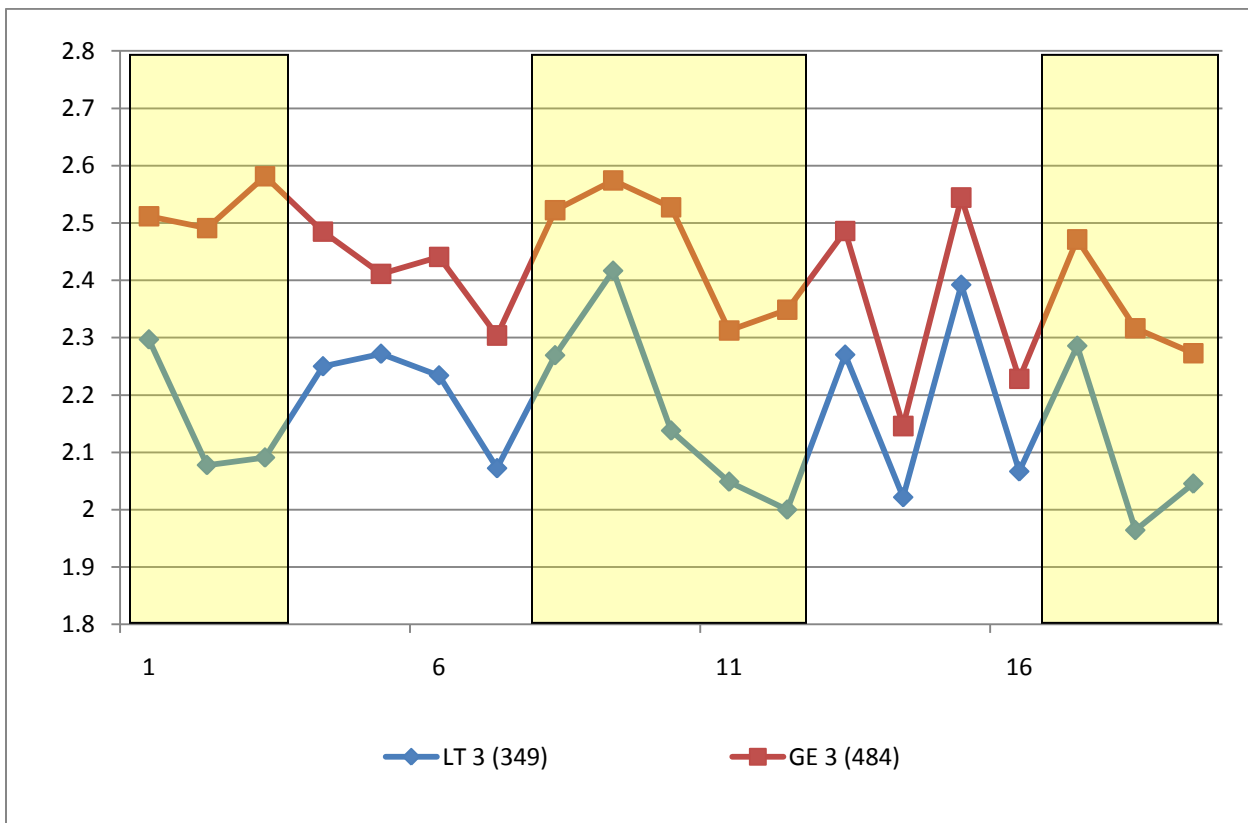
The various views are averages over groupings of students. In order, they are: AS & CTE, by ethnicity, above and below 3.0 GPA, by campus (TAC=Alamosa, TMC=Main Campus), and by sex.

Below these graphs are two histograms of GPA and credit-hours earned by students.



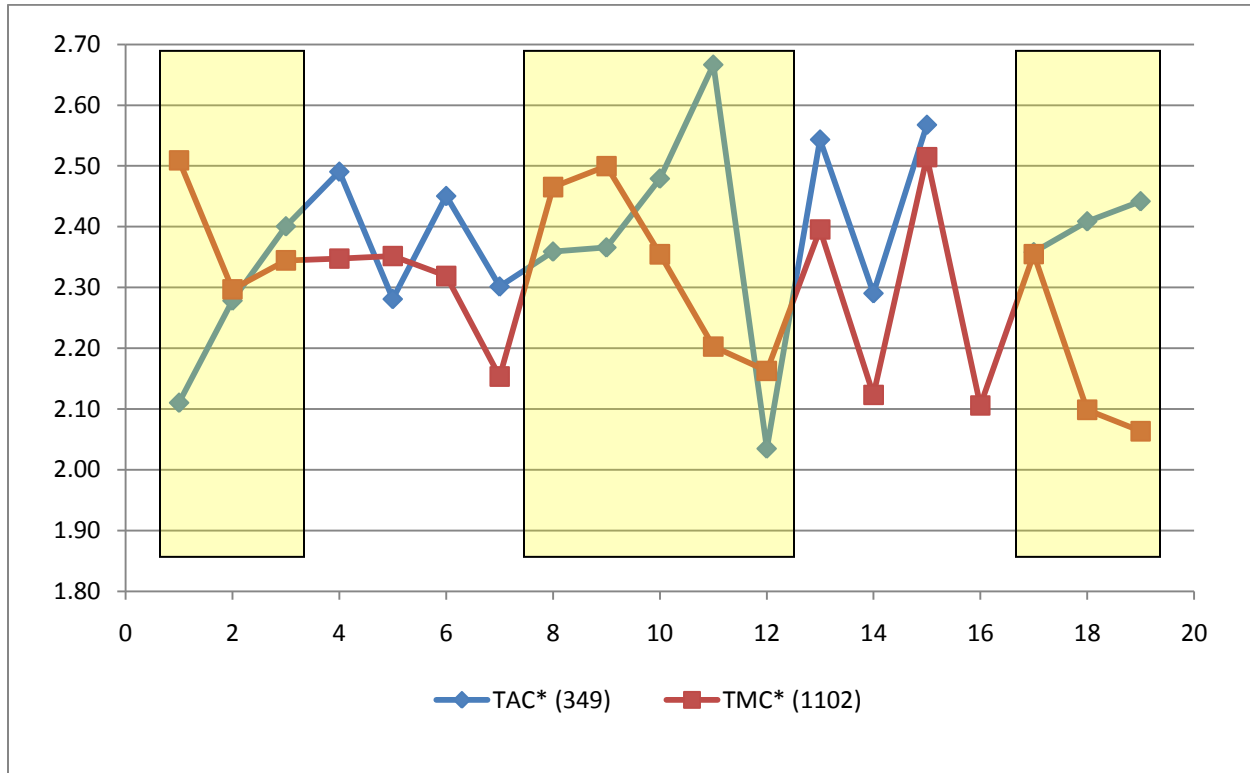


Graphs of scores on GEOs vs GPA - less than 3.0 (LT 3) and at least 3.0 (GE 3)

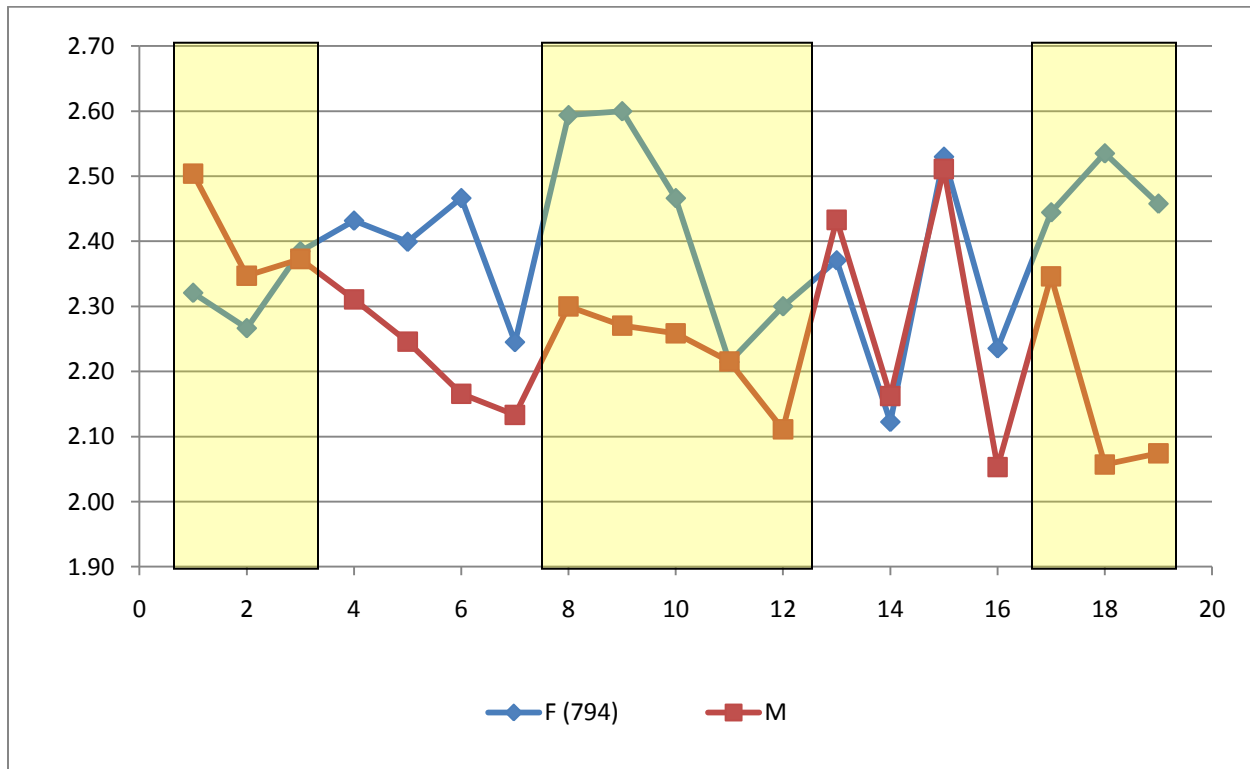


TAC = Alamosa campus

TMC = main, Trinidad, campus



Scores on GEOs as a function of Male vs Female



All students in Spring '09 + Fall '09 courses, maximum GPAs for the two terms:

