

Updated 4/30/2025 @ 3:10pm

2025
TRINIDAD STATE COLLEGE

SUMMER

Schedule



#ExceedExpectations
@



TRINIDADSTATE.EDU/SCHEDULE

STUDENT ADMISSIONS CHECKLIST

☐ **Apply for Admissions and Scholarships**

Apply for scholarships at the same time you apply for admission.

Application: trinidadstate.edu/apply

Scholarships: trinidadstate.edu/scholarships

☐ **Apply for Financial Aid**

File a Free Application for Federal Student Aid: www.fafsa.ed.gov

TSC Code: 001368 – you will need previous income tax records

FSA ID: _____

Password: _____

For support, contact the Financial Aid staff at 719-846-5017

or the Educational Opportunity Center at 719-846-5689.

☐ **High School Transcripts**

Submit proof of graduation or high school transcripts to the Admissions Office.

Have your high school send an official copy of your high school transcript at the time of application.

Send High School transcripts and documents to:

Admissions

Trinidad State College

600 Prospect Street

Trinidad, CO 81082

☐ **College Transcripts**

Send college transcripts to Trinidad State. If you have enrolled in any college courses while attending high school, have each college send an official transcript to the Office of the Registrar prior to enrollment.

Send High School transcripts and documents to:

Registrar

Trinidad State College

600 Prospect Street

Trinidad, CO 81082

☐ **Immunization**

Have your doctor send a copy of your immunization record to Trinidad State College.

Your record may be on your high school transcript.

Is your daily
commute
BORING?

TRY OURS!



STUDENT'S FIRST

TRINIDAD STATE

TABLE OF CONTENTS

• How to read the Schedule, How do you go to Class?, and Academic Pathways	04
• Trinidad Campus Summer 2025 Class List	05
• Valley Campus (Alamosa) Summer 2025 Class List.....	09
• Rural College Consortium Summer 2025 Class List.....	12
• Colorado Online Summer 2025 Class List	13
• Statewide Guaranteed Transfer.....	18
• General Information.....	20
• Phone Numbers.....	24
• Course Specific Fees	25
• Scholarship Opportunities.....	30

BUILDING CODES

Trinidad Campus ~ Trinidad, CO

TBERG	Berg Administration
TBV	Banta Vocational Building
TBOYD	Boyd Technology Building
TBOYD TCRM	Boyd Technology Classroom
TDAVIS	Davis Science Building
TDOWH	Latuda Hall
TEPC	Epic Building - Freedom Road
TGYM	Scott Gymnasium
THOSP	Mt. San Rafael Hospital
TLC	Learning Center
TLIB	Freudenthal Memorial Library
TLIB SMRM A, B	Library Seminar Rooms

TMC
TMULL
TTCDD
TRNGE
TSSC

Massari Performing Arts Center
Mullen Building
Democracy Drive
Gun Range
Sullivan Student Center

Valley Campus ~ Alamosa, CO

###
AHSB

Main Building, Valley Campus
Allied Health Sciences Building

RMLT Campus ~ Colorado Springs, CO

TOFCMP

Rocky Mountain Line Tech

IMPORTANT DATES FOR SUMMER 2025

March 10, 2025	Registration / Advising / Placement Testing Begins
May 27, 2025	Session 1 Classes Begin
June 9, 2025	Session 2 Classes Begin
June 19, 2025	Juneteenth (College Closed)
July 4, 2025	Independence Day
July 18, 2025	Last Day of Classes

How to Read the Schedule

Each course is identified in four parts: ,
CRN#, Subject, Course Number, and Section

Dates of class
and meeting times

Building and room class meets in. Always
check your TSCONNECT Portal for current class locations

CRN# SUB Course Sect Course Title

Hrs. Start End Start End Bldg. Room Days Instructor Campus



Days of the week the class is held:
M = Monday, T = Tuesday, W = Wednesday,
R = Thursday, F = Friday, S = Saturday, U = Sunday
Example: TR means the class meets Tuesdays & Thursdays.

How do you go to class?



In-Person, On-Campus

Hybrid On/Off Campus

Colorado Online

Description:

These classes require physical presence at set days, times, and location and are in-person, on-campus.

These classes require attendance at set days and times either in-person or virtual presence via WebEx/Zoom.

These classes are completely online (anytime).

Where do I go?

Classroom location noted on schedule.

Classroom location noted on schedule or virtual attendance.

100% Online (anytime).

ACADEMIC PATHWAYS

AGRICULTURE, NATURAL RESOURCES & ENERGY

Agriculture Business
Agriculture Education
Animal Science
Soil & Crop Sciences
Line Technician



... and so much more ...

BUSINESS & PUBLIC ADMINISTRATION

Accounting Clerk
Business Admin (BA)
Computer (CIS/CNG/CS)
Criminal Justice
Law Enforcement



... and so much more ...

EDUCATION

Teacher Preparation
Elementary Education
Special Education
Early Childhood
Supervisor (Infant/Toddler)



... and so much more ...

HEALTH SCIENCES

Nursing (AAS, BA)
Dental Assistant
Medical Assistant
Emergency Medical
Nurse Aide



... and so much more ...

SKILLED TRADES

Welding Technology
Automotive Service
Construction Technology
Gunsmithing
Cosmetology / Barbering



... and so much more ...

STEM & LIBERAL ARTS

Biology
Mathematics
Pre-Engineering
Psychology / Sociology
History / English
Art / Theatre



... and so much more ...

TRINIDAD CAMPUS SUMMER 2025 CLASS

IN-PERSON, ON CAMPUS			COMBINATION ON/OFF CAMPUS		ONLINE									
CRN	SUB	Course	Section	Title	Hrs	Start	End	Start	End	Bld	Room	Days	Instructor	Campus
ACCOUNTING														
17033	ACC	1015	H00	Payroll Accounting	3	27-May-25	3-Jul-25	D2L	D2L	TOFCMP	D2L	D2L	Shown	TSC Virtual
17034	ACC	1021	H00	Accounting Principles	3	27-May-25	3-Jul-25	D2L	D2L	TOFCMP	D2L	D2L	Shown	TSC Virtual
ART														
16863	ART	1110	H00	Art Appreciation: AH1	3	27-May-25	18-Jul-25	D2L	D2L	TOFCMP	D2L	F	Reiling	TSC Virtual
17021	ART	1110	H01	Art Appreciation: AH1	3	27-May-25	18-Jul-25	D2L	D2L	TOFCMP	D2L		Garcia	TSC Virtual
17022	ART	1111	H00	Art Hist Ancient/ Mediev: AH1	3	27-May-25	18-Jul-25	D2L	D2L	TOFCMP	D2L		Garcia	TSC Virtual
17023	ART	1112	H00	Art Hist Renaiss/1900: AH1	3	27-May-25	18-Jul-25	D2L	D2L	TOFCMP	D2L		Garcia	TSC Virtual
BEHAVIORAL HEALTH														
17168	PTE	1010	H00	Intro to Behavioral Health Care & Wellness	3	27-May-25	3-Jul-25	D2L	D2L	TOFCMP	D2L		Brydges	TSC Virtual
17169	BEH	1001	H00	MHCI: Preparedness and Empathy	3	27-May-25	3-Jul-25	D2L	D2L	TOFCMP	D2L		Brydges	TSC Virtual
17170	BEH	1030	H00	Beh Hlth Case Man & Clin Doc	1	7-Jul-25	8-Aug-25	D2L	D2L	TOFCMP	D2L		Brydges	TSC Virtual
17171	BEH	2030	H00	Applied Ther Com Skills	3	7-Jul-25	8-Aug-25	D2L	D2L	TOFCMP	D2L		Brydges	TSC Virtual
BIOLOGY														
16879	BIO	2101	H00	Human Anatomy&Phys I w/Lab:SC1	4	27-May-25	18-Jul-25	D2L	D2L	TOFCMP	D2L		Walker	TSC Virtual
16880	BIO	2102	H00	Human Anatomy&Phys IIw/Lab:SC1	4	27-May-25	18-Jul-25	D2L	D2L	TOFCMP	D2L		Walker	TSC Virtual
17013	BIO	2116	H00	Pathophysiology	4	27-May-25	18-Jul-25	0600PM	0750PM	TOFCMP	D2L	M	Moniot	TSC Virtual
BUSINESS														
16854	BUS	1015	H00	Introduction to Business	3	7-Jul-25	8-Aug-25	D2L	D2L	TOFCMP	D2L	D2L	Velasquez	TSC Virtual
16878	BUS	2017	H00	Business Communications	3	7-Jul-25	8-Aug-25	D2L	D2L	TOFCMP	D2L	D2L	Velasquez	TSC Virtual
17035	BUS	2016	H00	Legal Environment of Business	3	27-May-25	3-Jul-25	D2L	D2L	TOFCMP	D2L	D2L	Duber-Smith	TSC Virtual
17047	BUS	1002	H00	Entrepreneurial Operations	3	7-Jul-25	8-Aug-25	D2L	D2L	TOFCMP	D2L	D2L	Velasquez	TSC Virtual
COMMUNICATION														
17017	COM	1150	H00	Public Speaking	3	27-May-25	18-Jul-25	D2L	D2L	TOFCMP	D2L	D2L	Hamilton	TSC Virtual
17016	COM	1250	H00	Interpersonal Comm: SS3	3	27-May-25	18-Jul-25	D2L	D2L	TOFCMP	D2L	D2L	Hamilton	TSC Virtual
COMPUTER INFORMATION SYSTEMS														
17036	CIS	1015	H00	Introduction to CIS	3	27-May-25	3-Jul-25	D2L	D2L	TOFCMP	D2L	D2L	Falk	TSC Virtual
17037	CIS	1018	H00	Intro PC Applications	3	27-May-25	3-Jul-25	D2L	D2L	TOFCMP	D2L	D2L	Rasmussen	TSC Virtual
17039	CIS	1055	H00	Complete Spreadsheets	3	27-May-25	3-Jul-25	D2L	D2L	TOFCMP	D2L	D2L	Rasmussen	TSC Virtual
COMPUTER & NETWORKING TECHNOLOGY														
17048	CNG	1020	H00	A+ Certification Prep	3	7-Jul-25	8-Aug-25	D2L	D2L	TOFCMP	D2L	D2L	Williams	TSC Virtual
17049	CNG	1032	H00	Network Security Fundamnetals: Security										
				+ (Test Prep)	3	7-Jul-25	8-Aug-25	D2L	D2L	TOFCMP	D2L	D2L	Williams	TSC Virtual
17038	CNG	1024	H00	Networking 1: Network + (Test Prep)	3	27-May-25	3-Jul-25	D2L	D2L	TOFCMP	D2L	D2L	Falk	TSC Virtual
COSMETOLOGY														
16865	COS	1060	100	Intro to Infection Control	2	27-May-25	18-Jul-25	1000AM	1230PM	TMULL	301	F	Samora	TSC Trinidad
16866	COS	1061	100	Inter I: Infection Control	1	27-May-25	18-Jul-25	0900AM	0955AM			F	Samora	TSC Trinidad
16811	COS	2011	100	Adv Color	2	27-May-25	18-Jul-25	0800AM	0855AM	TMULL	301	MTWR	Samora	TSC Trinidad
16812	COS	2021	100	Adv Cutting	2	27-May-25	18-Jul-25	0900AM	1025AM	TMULL	301	MTWR	Samora	TSC Trinidad
16815	COS	2041	100	Advanced Chemical Texture	1	27-May-25	18-Jul-25	1030AM	1145AM	TMULL	301	MT	Samora	TSC Trinidad
16864	COS	2061	100	Adv Infection Control	1	27-May-25	18-Jul-25	0800AM	0855AM	TMULL	301	F	Samora	TSC Trinidad
CRIMINAL JUSTICE														
17175	CRJ	2057	H00	Victimology	3	9-Jun-25	18-Jul-25	1200PM	1250PM	TOFCMP	D2L	F	Sloane	TSC Virtual

TRINIDAD CAMPUS SUMMER 2025 CLASS LIST *(continued)*

IN-PERSON, ON CAMPUS			COMBINATION ON/OFF CAMPUS			ONLINE								
CRN	SUB	Course	Section	Title	Hrs	Start	End	Start	End	Bld	Room	Days	Instructor	Campus
EARLY CHILDHOOD														
17040	ECE	1011	H00	Intro to Early Childhood Education	3	27-May-25	3-Jul-25	D2L	D2L	TOFCMP	D2L	D2L	Briones	TSC Virtual
17050	ECE	1031	H00	Guidance Strategies for Young Children	3	27-May-25	3-Jul-25	D2L	D2L	TOFCMP	D2L	D2L	Briones	TSC Virtual
17051	ECE	1045	H00	Intro Early Childhood Education Techniques	3	7-Jul-25	8-Aug-25	D2L	D2L	TOFCMP	D2L	D2L	Plane	TSC Virtual
17052	ECE	2621	H00	ECE Curriculum Development:										
				Methods and Techniques	3	7-Jul-25	8-Aug-25	D2L	D2L	TOFCMP	D2L	D2L	Plane	TSC Virtual
ENGLISH														
17020	ENG	1021	H10	English Composition I:CO1	3	27-May-25	18-Jul-25	D2L	D2L	TOFCMP	D2L		Feinman-Stodghill	TSC Trinidad
16660	ENG	1021	H00	English Composition I:CO1	3	27-May-25	18-Jul-25	D2L	D2L	TOFCMP	D2L		Geraci	TSC Virtual
16834	ENG	1022	H00	English Composition II:CO2	3	27-May-25	18-Jul-25	D2L	D2L	TOFCMP	D2L		Geraci	TSC Virtual
ESTHETICIAN														
16813	EST	2010	100	Advanced Skin Care	2	27-May-25	18-Jul-25	0100PM	0210PM	TMULL	301	MTWR	Samora	TSC Trinidad
16814	EST	2011	100	Make-up	1	27-May-25	18-Jul-25	1030AM	1145AM	TMULL	301	WR	Samora	TSC Trinidad
ENVIRONMENTAL SCIENCE														
16836	ENV	1111	H00	Environmental Sci w/Lab: SC1	4	27-May-25	18-Jul-25	0500PM	0725PM	TOFCMP	D2L	MW	Cahoone	TSC Virtual
GUNSMITHING														
16852	GUN	1003	100	Blueing	2	2-Jun-25	6-Jun-25	0800AM	0500PM	TMULL	106	MTWRF	Campbell	TSC Trinidad
17014	GUN	1003	101	Blueing	2	2-Jun-25	6-Jun-25	0800AM	0500PM	TMULL	106	MTWRF	Campbell	TSC Trinidad
16920	GUN	1004	100	Alternative Finishes	2	9-Jun-25	13-Jun-25	0800AM	0500PM	TMULL	106	MTRF	Campbell	TSC Trinidad
16921	GUN	1004	101	Alternative Finishes	2	9-Jun-25	13-Jun-25	0800AM	0500PM	TMULL	106	MTRF	Campbell	TSC Trinidad
17015	GUN	1016	100	Welding for Gunsmiths	2	26-May-25	30-May-25	0800AM	0500PM	TBV	308	MTWRF	Sanchez	TSC Trinidad
16601	GUN	1016	101	Welding for Gunsmiths	2	26-May-25	30-May-25	0800AM	0500PM	TBV	308	MTWRF	Sanchez	TSC Trinidad
16872	GUN	1020	100	Basic Machine Shop	2	2-Jun-25	6-Jun-25	0800AM	0500PM	TMULL	211	MTWRF	Schmit	TSC Trinidad
16909	GUN	1020	101	Basic Machine Shop	2	2-Jun-25	6-Jun-25	0800AM	0500PM	TMULL	211	MTWRF	Schmit	TSC Trinidad
16908	GUN	1020	102	Basic Machine Shop	2	14-Jul-25	18-Jul-25	0800AM	0500PM	TMULL	211	MTWRF	Schmit	TSC Trinidad
16837	GUN	1020	103	Basic Machine Shop	2	14-Jul-25	18-Jul-25	0800AM	0500PM	TMULL	211	MTWRF	Schmit	TSC Trinidad
16838	GUN	1021	100	Advanced Machine Shop	2	9-Jun-25	13-Jun-25	0800AM	0500PM	TMULL	211	MTWRF	Schmit	TSC Trinidad
16910	GUN	1021	101	Advanced Machine Shop	2	9-Jun-25	13-Jun-25	0800AM	0500PM	TMULL	211	MTWRF	Schmit	TSC Trinidad
16873	GUN	1021	102	Advanced Machine Shop	2	21-Jul-25	25-Jul-25	0800AM	0500PM	TMULL	211	MTWRF	Schmit	TSC Trinidad
16911	GUN	1021	103	Advanced Machine Shop	2	21-Jul-25	25-Jul-25	0800AM	0500PM	TMULL	211	MTWRF	Schmit	TSC Trinidad
16870	GUN	1068	101	Single Action Revolver Mods	2	2-Jun-25	6-Jun-25	0800AM	0500PM	TMULL	306	MTWRF	Newport	TSC Trinidad
16912	GUN	1068	102	Single Action Revolver Mods	2	2-Jun-25	6-Jun-25	0800AM	0500PM	TMULL	306	MTWRF	Newport	TSC Trinidad
16868	GUN	1101	100	Introduction to Gunsmithing	2	7-Jul-25	11-Jul-25	0800AM	0500PM	TMULL	306	MTWRF	Newport	TSC Trinidad
16913	GUN	1101	101	Introduction to Gunsmithing	2	7/7/25	11-Jul-25	0800AM	0500PM	TMULL	306	MTWRF	Newport	TSC Trinidad
16778	GUN	1102	100	Benchmark Hand Tools	2	7/7/25	11-Jul-25	0800AM	0500PM	TMULL	106	MTWRF	Weisenborn	TSC Trinidad
16914	GUN	1102	102	Benchmark Hand Tools	2	7/7/25	11-Jul-25	0800AM	0500PM	TMULL	106	MTWRF	Weisenborn	TSC Trinidad
16869	GUN	1108	101	Action Blueprinting	2	23-Jun-25	27-Jun-25	0800AM	0500PM	TMULL	211	MTWRF	Schmit	TSC Trinidad
16915	GUN	1108	102	Action Blueprinting	2	23-Jun-25	27-Jun-25	0800AM	0500PM	TMULL	211	MTWRF	Schmit	TSC Trinidad
16875	GUN	2075	103	ST: Barreling Precision Rifles	2	7-Jul-25	11-Jul-25	0800AM	0500PM	TMULL	211	MTWRF	Schmit	TSC Trinidad
16917	GUN	2075	104	ST: Barreling Precision Rifles	2	7-Jul-25	11-Jul-25	0800AM	0500PM	TMULL	211	MTWRF	Schmit	TSC Trinidad
17131	GUN	1005	100	Color Case Hardening	2	23-Jun-25	27-Jun-25	0800AM	0500PM	TMULL	106	MTWRF	Newport	TSC Trinidad
17132	GUN	1005	101	Color Case Hardening	2	23-Jun-25	27-Jun-25	0800AM	0500PM	TMULL	106	MTWRF	Newport	TSC Trinidad
17133	GUN	1060	100	Smith & Wesson Armorer	2	23-Jun-25	27-Jun-25	0800AM	0500PM	TMULL	306	MTWRF	Staff	TSC Trinidad
17134	GUN	1060	101	Smith & Wesson Armorer	2	23-Jun-25	27-Jun-25	0800AM	0500PM	TMULL	306	MTWRF	Staff	TSC Trinidad
HEALTH PROFESSIONAL														
17130	HPR	1039	H00	Medical Terminology	2	27-May-25	18-Jul-25	D2L	D2L	TOFCMP	D2L	D2L	Medina	TSC Virtual
HEALTH & WELLNESS														
16861	HWE	1050	H00	Human Nutrition	3	27-May-25	18-Jul-25	D2L	D2L	TOFCMP	D2L	D2L	Medina	TSC Virtual
HISTORY														
16832	HIS	1310	H00	Western Civ:Antiquity-1650 HI1	3	27-May-25	18-Jul-25	D2L	D2L	TOFCMP	D2L	D2L	Eades	TSC Virtual
17173	HIS	2105	PH7	Women in U.S. History: HI1	3	27-May-25	18-Jul-25	1000AM	1200PM	TLIB	310	MW	Boone	Trinidad

TRINIDAD CAMPUS SUMMER 2025 CLASS LIST *(continued)*

IN-PERSON, ON CAMPUS			COMBINATION ON/OFF CAMPUS		ONLINE									
CRN	SUB	Course	Section	Title	Hrs	Start	End	Start	End	Bld	Room	Days	Instructor	Campus
MANAGEMENT														
17041	MAN	1002	H00	Ethics & Values	1	27-May-25	3-Jul-25	D2L	D2L	TOFCMP	D2L	D2L	Hammer	TSC Virtual
17042	MAN	1017	H00	Time Management	1	27-May-25	3-Jul-25	D2L	D2L	TOFCMP	D2L	D2L	Hammer	TSC Virtual
17043	MAN	2026	H00	Principles of Management	3	27-May-25	3-Jul-25	D2L	D2L	TOFCMP	D2L	D2L	Hammer	TSC Virtual
17044	MAN	2000	H00	Human Resource Management	3	27-May-25	3-Jul-25	D2L	D2L	TOFCMP	D2L	D2L	Hammer	TSC Virtual
MARKETING														
16907	MAR	1060	H00	Customer Service	3	7-Jul-25	8-Aug-25	D2L	D2L	TOFCMP	D2L	D2L	Duber-Smith	TSC Virtual
17053	MAR	2016	H00	Principles of Marketing	3	7-Jul-25	8-Aug-25	D2L	D2L	TOFCMP	D2L	D2L	Duber-Smith	TSC Virtual
MATHEMATICS														
17018	MAT	1240	H00	Math for Liberal Arts: MA1	4	27-May-25	18-Jul-25	D2L	D2L	TOFCMP	D2L	D2L	Maclaren	TSC Virtual
16776	MAT	1260	H00	Intro to Statistics: MA1	3	27-May-25	18-Jul-25	D2L	D2L	TOFCMP	D2L	D2L	Emerick	TSC Virtual
16736	MAT	1340	H00	College Algebra: MA1	4	27-May-25	18-Jul-25	0400PM	0530PM	TOFCMP	D2L	T	Maclaren	TSC Virtual
MEDICAL ASSISTING PROFESSIONAL														
16988	MAP	1010	PH5	Medical Office Administration	4	27-May-25	18-Jul-25	0100PM	0500PM	TDAVIS	103	M	O'Brien	TSC Trinidad
16989	MAP	1020	PH5	Medical Office Financial Mgmt	4	27-May-25	18-Jul-25	0100PM	0500PM	TDAVIS	103	T	O'Brien	TSC Trinidad
16856	MAP	1083	H00	Medical Assistant Internship	4	27-May-25	18-Jul-25	1100AM	1200PM	TOFCMP	D2L	R	O'Brien	TSC Virtual
16856	MAP	1083	H00	Medical Assistant Internship	4	27-May-25	18-Jul-25	1100AM	1200PM	TOFCMP	D2L	R	O'Brien	TSC Virtual
NURSING														
16777	NUR	1069	100	Transition into Practical Nrsng	4	19-May-25	20-Jun-25	0800AM	1150AM	TDAVIS	115	T	Vigil/Salapich	TSC Trinidad
16737	NUR	2011	150	Psychiatric-Mental Health NSG	4	27-May-25	4-Jul-25	0600AM	0600PM	TDAVIS	115	RFS	Bowman	TSC Trinidad
16737	NUR	2011	150	Psychiatric-Mental Health NSG	4	27-May-25	4-Jul-25	1200PM	0300PM	TDAVIS	115	TW	Bowman	TSC Trinidad
16844	NUR	3001	H00	Integration into BSN Practice	3	19-May-25	29-Jun-25	D2L	D2L	TOFCMP	D2L	D2L	Cook	TSC Virtual
16855	NUR	4009	H00	Leadership in the Nur. Profess	3.5	19-May-25	20-Jul-25	D2L	D2L	TOFCMP	D2L	D2L	Garcia	TSC Virtual
17011	NUR	4010	H00	Community Health Nursing/Prac	6	19-May-25	10-Aug-25	D2L	D2L	TOFCMP	D2L	D2L	Gilbert	TSC Virtual
POLITICAL SCIENCE														
16876	PSC	1011	H00	American Government: SS1	3	27-May-25	18-Jul-25	D2L	D2L	TOFCMP	D2L	D2L	Lanier	TSC Virtual
PSYCHOLOGY														
16839	PSY	1001	H00	General Psychology I: SS3	3	27-May-25	18-Jul-25	D2L	D2L	TOFCMP	D2L	D2L	Tabeling-Garcia	TSC Virtual
16801	PSY	2440	H00	Human Growth & Developmnt: SS3	3	27-May-25	18-Jul-25	D2L	D2L	TOFCMP	D2L	D2L	Naranjo	TSC Virtual
16867	PSY	2552	H00	Psychopathology: SS3	3	27-May-25	18-Jul-25	D2L	D2L	TOFCMP	D2L	D2L	Tabeling-Garcia	TSC Virtual
17045	PSY	2441	H00	Child Development: SS3	3	7-Jul-25	8-Aug-25	D2L	D2L	TOFCMP	D2L	D2L	Herbsttritt	TSC Virtual
17046	PSY	2331	H00	Positive Psychology: SS3	3	27-May-25	18-Jul-25	0100PM	0215PM	TOFCMP	D2L	TR	Brydges	TSC Virtual
SOCIOLOGY														
16874	SOC	1001	H00	Intro to Sociology I : SS3	3	27-May-25	18-Jul-25	0500PM	0550PM	TOFCMP	D2L	W	Tabeling-Garcia	TSC Virtual
THEATRE														
17181	THE	1016	100	Technical Theatre	3	9-Jun-24	18-Jul-25	TBA	TBA	TBA	TBA	TBA	Maxwell	TSC Trinidad
1173	SRHS	1047	CED	Leather Holster Making	0	9-Jun-25	13-Jun-24	0800AM	0500PM	TLIB	311	MTWRF MTWRF		TSC Trinidad

TRINIDAD CAMPUS SUMMER 2025 CLASS LIST *(continued)*

IN-PERSON, ON CAMPUS			COMBINATION ON/OFF CAMPUS		ONLINE									
CRN	SUB	Course	Section	Title	Hrs	Start	End	Start	End	Bld	Room	Days	Instructor	Campus
CONTINUING EDUCATION														
1151	CNED	1026	CED	Basic Machine Shop	0	2-Jun-25	6-Jun-25	0800AM	0500PM	TMULL	211	MTWRF	Schmit	TSC Trinidad
1152	CNED	1027	CED	Welding for Gunsmiths	0	26-May-24	30-May-24	0800AM	0500PM	TBV	308	MTWRF	Sanchez	TSC Trinidad
1153	CNED	1028	CED	Firearms Bluing	0	2-Jun-24	6-Jun-24	0800AM	0500PM	TMULL	106	MTWRF	Campbell	TSC Trinidad
1154	CNED	1029	CED	Single Action Revolver Tuning	0	2-Jun-24	6-Jun-24	0800AM	0500PM	TMULL	306	MTWRF	Newport	TSC Trinidad
1156	CNED	1030	CED	Advanced Machine Shop	0	9-Jun-24	13-Jun-24	0800AM	0500PM	TMULL	211	MTWRF	Schmit	TSC Trinidad
1157	CNED	1031	CED	Alternative Finishes	0	9-Jun-24	13-Jun-24	0800AM	0500PM	TMULL	211	MTWRF	Campbell	TSC Trinidad
1158	CNED	1032	CED	Basic Bladesmithing	0	9-Jun-24	13-Jun-24	0800AM	0500PM	TBV	308	MTWRF	Rollert	TSC Trinidad
1159	CNED	1033	CED	Action Blueprinting	0	23-Jun-24	27-Jun-24	0800AM	0500PM	TMULL	211	MTWRF	Schmit	TSC Trinidad
1160	CNED	1034	CED	Color Case Hardening	0	23-Jun-24	27-Jun-24	0800AM	0500PM	TMULL	106	MTWRF	Newport	TSC Trinidad
1161	CNED	1036	CED	Smith & Wesson Armorer	0	23-Jun-24	27-Jun-24	0800AM	0500PM	TMULL	306	MTWRF	STAFF	TSC Trinidad
1162	CNED	1037	CED	Introduction to Gunsmithing	0	7-Jul-24	11-Jul-24	0800AM	0500PM	TMULL	306	MTWRF	Newport	TSC Trinidad
1163	CNED	1038	CED	Barreling Precision Rifles	0	7-Jul-24	11-Jul-24	0800AM	0500PM	TMULL	211	MTWRF	Schmit	TSC Trinidad
1164	CNED	1039	CED	Benchmark Hand Tools & Metall	0	7-Jul-24	11-Jul-24	0800AM	0500PM	TMULL	106	MTWRF	Weisenborn	TSC Trinidad
1165	CNED	1040	CED	Basic Machine Shop	0	14-Jul-24	18-Jul-24	0800AM	0500PM	TMULL	211	MTWRF	Schmit	TSC Trinidad
1166	CNED	1041	CED	Brownells AR15 Armorer's Class	0	14-Jul-24	18-Jul-24	0800AM	0500PM	TMULL	306	MTWRF	STAFF	TSC Trinidad
1167	CNED	1042	CED	Advanced Machine Shop	0	21-Jul-24	25-Jul-24	0800AM	0500PM	TMULL	211	MTWRF	Schmit	TSC Trinidad
1168	CNED	1043	CED	Weekend Machine Lab	0	7-Jun-24	8-Jun-24	0800AM	0500PM	TMULL	211	MTWRF	Schmit	TSC Trinidad
1169	CNED	1044	CED	Weekend Machine Lab	0	19-Jul-24	20-Jul-24	0800AM	0500PM	TMULL	211	MTWRF	Schmit	TSC Trinidad
1170	SRHS	1045	CED	Hats with Tom Hirt	0	2-Jun-24	5-Jun-24	0800AM	0500PM	TLIB	311	MTWRF	Hirt	TSC Trinidad
1171	SRHS	1046	CED	Damascus Billet Making	0	2-Jun-24	13-Jun-24	0800AM	0500PM	TBV	308	MTWRF	Rollert	TSC Trinidad

NOTES:

[illegible]

VALLEY CAMPUS SUMMER 2025 CLASS LIST

IN-PERSON, ON CAMPUS

COMBINATION ON/OFF CAMPUS

ONLINE

CRN	SUB	Course	Section	Title	Hrs	Start	End	Start	End	Bld	Room	Days	Instructor	Campus
ACCOUNTING														
17033	ACC	1015	H00	Payroll Accounting	3	27-May-25	3-Jul-25	D2L	D2L	TOFCMP	D2L	D2L	Shown	TSC Virtual
17034	ACC	1021	H00	Accounting Principles	3	27-May-25	3-Jul-25	D2L	D2L	TOFCMP	D2L	D2L	Shown	TSC Virtual

ART

16863	ART	1110	H00	Art Appreciation: AH1	3	27-May-25	18-Jul-25	D2L	D2L	TOFCMP	D2L	F	Reiling	TSC Virtual
17021	ART	1110	H01	Art Appreciation: AH1	3	27-May-25	18-Jul-25	D2L	D2L	TOFCMP	D2L	D2L	Garcia	TSC Virtual
17022	ART	1111	H00	Art Hist Ancient/ Mediev: AH1	3	27-May-25	18-Jul-25	D2L	D2L	TOFCMP	D2L	D2L	Garcia	TSC Virtual
17023	ART	1112	H00	Art Hist Renaiss/1900: AH1	3	27-May-25	18-Jul-25	D2L	D2L	TOFCMP	D2L	D2L	Garcia	TSC Virtual

BEHAVIORAL HEALTH

17168	PTE	1010	H00	Intro to Behavioral Health Care & Wellness	3	27-May-25	3-Jul-25	D2L	D2L	TOFCMP	D2L		Brydges	TSC Virtual
17169	BEH	1001	H00	MHCI: Preparedness and Empathy	3	27-May-25	3-Jul-25	D2L	D2L	TOFCMP	D2L		Brydges	TSC Virtual
17170	BEH	1030	H00	Beh Hlth Case Man & Clin Doc	1	7-Jul-25	8-Aug-25	D2L	D2L	TOFCMP	D2L		Brydges	TSC Virtual
17171	BEH	2030	H00	Applied Ther Com Skills	3	7-Jul-25	8-Aug-25	D2L	D2L	TOFCMP	D2L		Brydges	TSC Virtual

BIOLOGY

16804	BIO	2101	200	Human Anatomy&Phys I w/Lab:SC1	4	27-May-25	18-Jul-25	0800AM	1200PM	TVC	208	W	Wittler	TSC Alamosa
16804	BIO	2101	200	Human Anatomy&Phys I w/Lab:SC1	4	27-May-25	18-Jul-25	0800AM	1025AM	TVC	208	MT	Wittler	TSC Alamosa
16879	BIO	2101	H00	Human Anatomy&Phys I w/Lab:SC1	4	27-May-25	18-Jul-25	D2L	D2L	TOFCMP	D2L	D2L	Walker	TSC Virtual
16880	BIO	2102	H00	Human Anatomy&Phys IIw/Lab:SC1	4	27-May-25	18-Jul-25	D2L	D2L	TOFCMP	D2L	D2L	Walker	TSC Virtual
17035	BUS	2016	H00	Legal Environment of Business	3	27-May-25	3-Jul-25	D2L	D2L	TOFCMP	D2L	D2L	Duber-Smith	TSC Virtual
17013	BIO	2116	H00	Pathophysiology	4	27-May-25	18-Jul-25	0600PM	0750PM	TOFCMP	D2L	M	Moniot	TSC Virtual

BUSINESS

16854	BUS	1015	H00	Introduction to Business	3	7-Jul-25	8-Aug-25	D2L	D2L	TOFCMP	D2L	D2L	Velasquez	TSC Virtual
16878	BUS	2017	H00	Business Communications	3	7-Jul-25	8-Aug-25	D2L	D2L	TOFCMP	D2L	D2L	Velasquez	TSC Virtual
17035	BUS	2016	H00	Legal Environment of Business	3	27-May-25	3-Jul-25	D2L	D2L	TOFCMP	D2L	D2L	Hammer	TSC Virtual
17047	BUS	1002	H00	Entrepreneurial Operations	3	7-Jul-25	8-Aug-25	D2L	D2L	TOFCMP	D2L	D2L	Velasquez	TSC Virtual

COMMUNICATION

17017	COM	1150	H00	Public Speaking	3	27-May-25	18-Jul-25	D2L	D2L	TOFCMP	D2L	D2L	Hamilton	TSC Virtual
17016	COM	1250	H00	Interpersonal Comm: SS3	3	27-May-25	18-Jul-25	D2L	D2L	TOFCMP	D2L	D2L	Hamilton	TSC Virtual

COMPUTER INFORMATION SYSTEMS

17036	CIS	1015	H00	Introduction to CIS	3	27-May-25	3-Jul-25	D2L	D2L	TOFCMP	D2L	D2L	Falk	TSC Virtual
17037	CIS	1018	H01	Intro PC Applications	3	27-May-25	3-Jul-25	D2L	D2L	TOFCMP	D2L	D2L	Rasmussen	TSC Virtual
17039	CIS	1055	H00	Complete Spreadsheets	3	27-May-25	3-Jul-25	D2L	D2L	TOFCMP	D2L	D2L	Rasmussen	TSC Virtual

COMPUTER & NETWORKING TECHNOLOGY

17048	CNG	1020	H00	A+ Certification Prep	3	7-Jul-25	8-Aug-25	D2L	D2L	TOFCMP	D2L	D2L	Williams	TSC Virtual
17049	CNG	1032	H00	Network Security Fundamentals: Security + (Test Prep)	3	7-Jul-25	8-Aug-25	D2L	D2L	TOFCMP	D2L	D2L	Williams	TSC Virtual
17038	CNG	1024	H00	Networking 1: Network + (Test Prep)	3	27-May-25	3-Jul-25	D2L	D2L	TOFCMP	D2L	D2L	Falk	TSC Virtual

COSMETOLOGY

16891	COS	1050	H20	Laws, Rules, and Regulations	1	27-May-25	18-Jul-25	1000AM	1155AM	TVC	117	M	Sandoval	TSC Alamosa
16890	COS	1060	H20	Intro to Infection Control	2	27-May-25	18-Jul-25	0800AM	0955AM	TVC	117	M	Sandoval	TSC Alamosa
16904	COS	1061	H20	Inter I: Infection Control	1	27-May-25	18-Jul-25	1130AM	0100PM	TVC	117	W	Sandoval	TSC Alamosa
16892	COS	2050	H20	Bus Mgmt/Per Skills/Ethics	1	27-May-25	18-Jul-25	0100PM	0255PM	TVC	117	M	Sandoval	TSC Alamosa
16905	COS	2060	H20	Inter II: Infection Control	2	27-May-25	18-Jul-25	0100PM	0235PM	TVC	107	MW	Sandoval	TSC Alamosa
16906	COS	2061	H20	Adv Infection Control	1	27-May-25	18-Jul-25	0100PM	0230PM	TVC	107	TR	Sandoval	TSC Alamosa
17008	COS	2062	H20	Adv II Disinfect/Sanitization/Safety	3	27-May-25	18-Jul-25	D2L	D2L	TOFCMP	D2L	D2L	Sandoval	TSC Alamosa

CRIMINAL JUSTICE

16985	CRJ	2057	H00	Victimology	3	7-Jul-25	8-Aug-25	1200PM	1250PM	TOFCMP	D2L	F	Sloane	TSC Virtual
-------	-----	------	-----	-------------	---	----------	----------	--------	--------	--------	-----	---	--------	-------------

VALLEY CAMPUS SUMMER 2025 CLASS LIST *(continued)*

IN-PERSON, ON CAMPUS				COMBINATION ON/OFF CAMPUS				ONLINE						
CRN	SUB	Course	Section	Title	Hrs	Start	End	Start	End	Bld	Room	Days	Instructor	Campus
EARLY CHILDHOOD														
17040	ECE	1011	H00	Intro to Early Childhood Education	3	27-May-25	3-Jul-25	D2L	D2L	TOFCMP	D2L	D2L	Briones	TSC Virtual
17050	ECE	1031	H00	Guidance Strategies for Young Children	3	27-May-25	3-Jul-25	D2L	D2L	TOFCMP	D2L	D2L	Briones	TSC Virtual
17051	ECE	1045	H00	Intro to Early Childhood Edu Techniques	3	7-Jul-25	8-Aug-25	D2L	D2L	TOFCMP	D2L	D2L	Plane	TSC Virtual
17052	ECE	2621	H00	ECE Curriculum Development:										
				Methods and Techniques	3	7-Jul-25	8-Aug-25	D2L	D2L	TOFCMP	D2L	D2L	Plane	TSC Virtual
EDUCATION														
30534	EDU	2088	H20	Practicum II	3	21-Jan-25	14-May-25	D2L	D2L	TOFCMP	D2L	M	Trujillo	TSC Alamosa
30461	EDU	2341	PH7	Multicultural Education	3	21-Jan-25	14-May-25	0530PM	0800PM	TVC	219	W	Atencio	TSC Alamosa
ENGLISH														
16660	ENG	1021	H00	English Composition I:CO1	3	27-May-25	18-Jul-25	D2L	D2L	TOFCMP	D2L	D2L	Geraci	TSC Virtual
16834	ENG	1022	H00	English Composition II:CO2	3	27-May-25	18-Jul-25	D2L	D2L	TOFCMP	D2L	D2L	Geraci	TSC Virtual
ENVIRONMENTAL SCIENCE														
16836	ENV	1111	H00	Environmental Sci w/Lab: SC1	4	27-May-25	18-Jul-25	0500PM	0725PM	TOFCMP	D2L	MW	Cahoone	TSC Virtual
ESTHETICIAN														
16899	EST	1010	200	Intro Skin Care	3	27-May-25	18-Jul-25	0730AM	0920AM	TVC	214	MW	Presley	TSC Alamosa
16900	EST	1011	200	Intermediate Skin Care	2	27-May-25	18-Jul-25	0930AM	1130AM	TVC	214	TR	Presley	TSC Alamosa
16901	EST	2010	200	Advanced Skin Care	2	27-May-25	18-Jul-25	0930AM	1130AM	TVC	214	MW	Presley	TSC Alamosa
16902	EST	2011	200	Make-up	1	27-May-25	18-Jul-25	0100PM	0155PM	TVC	214	M	Presley	TSC Alamosa
16903	EST	2012	200	Hair Removal	3	27-May-25	18-Jul-25	0730AM	0930AM	TVC	214	TR	Presley	TSC Alamosa
HEALTH PROFESSIONAL														
17130	HPR	1039	H00	Medical Terminology	2	27-May-25	18-Jul-25	D2L	D2L	TOFCMP	D2L	D2L	Medina	TSC Virtual
HEALTH & WELLNESS														
16861	HWE	1050	H00	Human Nutrition	3	27-May-25	18-Jul-25	D2L	D2L	TOFCMP	D2L	D2L	Medina	TSC Virtual
HISTORY														
16832	HIS	1310	H00	Western Civ:Antiquity-1650 HI1	3	27-May-25	18-Jul-25	D2L	D2L	TOFCMP	D2L	D2L	Eades	TSC Virtual
17174	HIS	2105	PH6	Women in U.S. History: HI1	3	27-May-25	18-Jul-25	1000AM	1200PM	TBV	219	MW	Boone	Valley Campus
MANAGEMENT														
17041	MAN	1002	H00	Ethics & Values	1	27-May-25	3-Jul-25	D2L	D2L	TOFCMP	D2L	D2L	Hammer	Trinidad Virtual
17042	MAN	1017	H00	Time Management	1	27-May-25	3-Jul-25	D2L	D2L	TOFCMP	D2L	D2L	Hammer	Trinidad Virtual
17043	MAN	2026	H00	Principles of Management	3	27-May-25	3-Jul-25	D2L	D2L	TOFCMP	D2L	D2L	Hammer	Trinidad Virtual
17044	MAN	2000	H00	Human Resource Management	3	27-May-25	3-Jul-25	D2L	D2L	TOFCMP	D2L	D2L	Hammer	Trinidad Virtual
MARKETING														
16907	MAR	1060	H00	Customer Service	3	7-Jul-25	8-Aug-25	0730AM	0900AM	TOFCMP	D2L	MW	Duber-Smith	TSC Virtual
17052	MAR	2016	H00	Principles of Marketing	3	7-Jul-25	8-Aug-25	D2L	D2L	TOFCMP	D2L	D2L	Duber-Smith	Trinidad Virtual
MATHEMATICS														
17018	MAT	1240	H00	Math for Liberal Arts: MA1	4	27-May-25	18-Jul-25	D2L	D2L	TOFCMP	D2L	D2L	Maclaren	TSC Virtual
16776	MAT	1260	H00	Intro to Statistics: MA1	3	27-May-25	18-Jul-25	D2L	D2L	TOFCMP	D2L	D2L	Emerick	TSC Virtual
16736	MAT	1340	H00	College Algebra: MA1	4	27-May-25	18-Jul-25	0400PM	0530PM	TOFCMP	D2L	T	Maclaren	TSC Virtual
MEDICAL ASSISTING PROFESSIONAL														
16856	MAP	1083	H00	Medical Assistant Internship	4	27-May-25	18-Jul-25	1100AM	1200PM	TVC	TBA	R	O'Brien	TSC Virtual
16856	MAP	1083	H00	Medical Assistant Internship	4	27-May-25	18-Jul-25	1100AM	1200PM	TVC	TBA	R	O'Brien	TSC Virtual
16986	MAP	1010	PH7	Medical Office Administration	4	27-May-25	18-Jul-25	0100PM	0500PM	TVC	103	M	O'Brien	TSC Alamosa
16987	MAP	1020	PH7	Medical Office Financial Mgmt	4	27-May-25	18-Jul-25	0100PM	0500PM	TVC	103	T	O'Brien	TSC Alamosa
NAIL TECHNICIAN														
16895	NAT	1010	200	Intro to Nail Care	3	27-May-25	18-Jul-25	0730AM	0920AM	TVC	122	MW	Sandoval	TSC Alamosa
16896	NAT	1011	200	Inter I Nail Care	2	27-May-25	18-Jul-25	0930AM	1130AM	TVC	122	MW	Sandoval	TSC Alamosa
16897	NAT	2010	200	Advanced Nail Care	2	27-May-25	18-Jul-25	0730AM	0920AM	TVC	122	TR	Sandoval	TSC Alamosa
16898	NAT	2011	200	Nail Enhancements	5	27-May-25	18-Jul-25	0930AM	1230PM	TVC	122	TR	Sandoval	TSC Alamosa

[illegible]

RURAL COLLEGE CONSORTIUM SUMMER 2025 CLASS

#CRN	SUB	Course	Sect.	Course Description	Hrs	Start	End		Instructor	Campus
17176	CRJ	2057	R11	Victimology	3	16-Jun-25	3-Aug-25	RM	STAFF	TRZ

COLORADO ONLINE SUMMER 2025 CLASS LIST

#CRN	SUB	CORS	SEC	COURSE DESCRIPTION	HRS	START	END	SECT	INST	CAMPUS
16604	ACC	1001	Z21	Fundamentals of Accounting	3	27-May-25	3-Aug-25	ON	STAFF	TCZ
16605	ACC	1015	Z21	Payroll Accounting	3	27-May-25	3-Aug-25	ON	STAFF	TCZ
16758	ACC	1035	Z21	Spreadsheet Apps/ Accounting	3	27-May-25	3-Aug-25	ON	STAFF	TCZ
17137	ACC	2012	Z21	Intermediate Accounting II	4	27-May-25	3-Aug-25	ON	STAFF	TCZ
16779	ANT	1001	Z21	Cultural Anthropology: SS3	3	27-May-25	3-Aug-25	ON	STAFF	TCZ
16608	ANT	1001	Z41	Cultural Anthropology: SS3	3	16-Jun-25	3-Aug-25	ON	STAFF	TCZ
16780	ANT	1003	Z21	Intro to Archaeology: SS3	3	27-May-25	3-Aug-25	ON	STAFF	TCZ
16767	ANT	1005	Z21	Bio Anthropology W/Lab: SC1	4	27-May-25	3-Aug-25	ON	STAFF	TCZ
16926	ANT	1005	Z41	Bio Anthropology W/Lab: SC1	4	16-Jun-25	3-Aug-25	ON	STAFF	TCZ
16808	ANT	2125	Z21	Anth of Religion: SS3	3	27-May-25	3-Aug-25	ON	STAFF	TCZ
17177	ART	1002	Z21	Visual Concepts 2-D Design	3	27-May-25	3-Aug-25	ON	STAFF	TCZ
16609	ART	1110	Z21	Art Appreciation: AH1	3	27-May-25	3-Aug-25	ON	STAFF	TCZ
16745	ART	1110	Z41	Art Appreciation: AH1	3	16-Jun-25	3-Aug-25	ON	STAFF	TCZ
16927	ART	1111	Z21	Art Hist Ancient/ Mediev: AH1	3	27-May-25	3-Aug-25	ON	STAFF	TCZ
16610	ART	1111	Z41	Art Hist Ancient/ Mediev: AH1	3	16-Jun-25	3-Aug-25	ON	STAFF	TCZ
16611	ART	1112	Z21	Art Hist Renaiss/1900: AH1	3	27-May-25	3-Aug-25	ON	STAFF	TCZ
16928	ART	1112	Z41	Art Hist Renaiss/1900: AH1	3	16-Jun-25	3-Aug-25	ON	STAFF	TCZ
17178	ART	1201	Z21	Drawing I	3	27-May-25	3-Aug-25	ON	STAFF	TCZ
16929	ART	1401	Z21	Digital Photography I	3	27-May-25	3-Aug-25	ON	STAFF	TCZ
16612	AST	1110	Z21	Planetary Astronomy w/Lab: SC1	4	27-May-25	3-Aug-25	ON	STAFF	TCZ
16613	AST	1120	Z21	Stellar Astronomy w/Lab: SC1	4	27-May-25	3-Aug-25	ON	STAFF	TCZ
16930	BIO	1004	Z21	Biology:A Human Approach: SC1	4	27-May-25	3-Aug-25	ON	STAFF	TCZ
17138	BIO	1005	Z21	Science of Biology w/Lab: SC1	4	27-May-25	3-Aug-25	ON	STAFF	TCZ
17139	BIO	1006	Z21	Basic Anatomy and Physiology	4	27-May-25	3-Aug-25	ON	STAFF	TCZ
17065	BIO	1111	X46	GenBio I:Molec & Cell/Lab: SC1	5	27-May-25	3-Aug-25	ON	STAFF	TCX
17140	BIO	1111	Z21	GenBio I:Molec & Cell/Lab: SC1	5	27-May-25	3-Aug-25	ON	STAFF	TCZ
17141	BIO	1112	Z21	GenBioII:Ecol&Organism/Lab:SC1	5	27-May-25	3-Aug-25	ON	STAFF	TCZ
16617	BIO	2101	Z21	Human Anatomy&Phys I w/Lab:SC1	4	27-May-25	3-Aug-25	ON	STAFF	TCZ
16618	BIO	2102	Z21	Human Anatomy&Phys IIw/Lab:SC1	4	27-May-25	3-Aug-25	ON	STAFF	TCZ
17142	BIO	2104	Z21	Microbiology w/Lab: SC1	4	27-May-25	3-Aug-25	ON	STAFF	TCZ
17143	BIO	2116	Z21	Pathophysiology	4	27-May-25	3-Aug-25	ON	STAFF	TCZ
16621	BUS	1015	Z21	Introduction to Business	3	27-May-25	3-Aug-25	ON	STAFF	TCZ
16746	BUS	1015	Z41	Introduction to Business	3	16-Jun-25	3-Aug-25	ON	STAFF	TCZ
16931	BUS	1016	Z21	Personal Finance	3	27-May-25	3-Aug-25	ON	STAFF	TCZ
17144	BUS	1016	Z41	Personal Finance	3	16-Jun-25	3-Aug-25	ON	STAFF	TCZ
16623	BUS	2016	Z21	Legal Environment of Business	3	27-May-25	3-Aug-25	ON	STAFF	TCZ
16932	BUS	2016	Z41	Legal Environment of Business	3	16-Jun-25	3-Aug-25	ON	STAFF	TCZ
16624	BUS	2017	Z21	Business Communications	3	27-May-25	3-Aug-25	ON	STAFF	TCZ
16933	BUS	2017	Z41	Business Communications	3	16-Jun-25	3-Aug-25	ON	STAFF	TCZ
16625	BUS	2026	Z21	Business Statistics	3	27-May-25	3-Aug-25	ON	STAFF	TCZ
16934	BUS	2026	Z41	Business Statistics	3	16-Jun-25	3-Aug-25	ON	STAFF	TCZ
17145	CAD	2220	Z21	Revit Architecture	3	27-May-25	3-Aug-25	ON	STAFF	TCZ
16626	CHE	1011	Z21	Intro to Chemistry I/Lab: SC1	5	27-May-25	3-Aug-25	ON	STAFF	TCZ
16627	CHE	1012	Z21	Intro to Chemistry II/Lab: SC1	5	27-May-25	3-Aug-25	ON	STAFF	TCZ
16628	CHE	1111	Z21	Gen College Chem I/Lab: SC1	5	27-May-25	3-Aug-25	ON	STAFF	TCZ
16629	CHE	1112	Z21	Gen College Chem II/Lab: SC1	5	27-May-25	3-Aug-25	ON	STAFF	TCZ
16630	CIS	1015	Z21	Intro to Computer Info Sys	3	27-May-25	3-Aug-25	ON	STAFF	TCZ
16631	CIS	1018	Z21	Intro PC Applications	3	27-May-25	3-Aug-25	ON	STAFF	TCZ
16781	CIS	1018	Z41	Intro PC Applications	3	16-Jun-25	3-Aug-25	ON	STAFF	TCZ
16632	CIS	1035	Z21	Complete Word Processing	3	27-May-25	3-Aug-25	ON	STAFF	TCZ
16633	CIS	1045	Z21	Intro to Desktop Database	3	27-May-25	3-Aug-25	ON	STAFF	TCZ
16634	CIS	1055	Z21	Complete Spreadsheets	3	27-May-25	3-Aug-25	ON	STAFF	TCZ
16935	CIS	2040	Z21	Database Design & Development	3	27-May-25	3-Aug-25	ON	STAFF	TCZ
17147	CIS	2040	Z41	Database Design & Development	3	16-Jun-25	3-Aug-25	ON	STAFF	TCZ

COLORADO ONLINE SUMMER 2025 CLASS LIST (continued)

#CRN	SUB	CORS	SEC	COURSE DESCRIPTION	HRS	START	END	SECT	INST	CAMPUS
16635	CIS	2067	Z21	Mgmt of Information Systems	3	27-May-25	3-Aug-25	ON	STAFF	TCZ
17006	CIS	2068	Z21	Systems Analysis and Design I	3	27-May-25	3-Aug-25	ON	STAFF	TCZ
16731	CNG	1001	Z21	Networking Fundamentals	3	27-May-25	3-Aug-25	ON	STAFF	TCZ
16936	CNG	1020	Z21	A+ Certification Preparation	4	27-May-25	3-Aug-25	ON	STAFF	TCZ
16937	CNG	1031	Z21	Prin of Information Assurance	3	27-May-25	3-Aug-25	ON	STAFF	TCZ
17007	CNG	1042	Z21	Intro to Cloud Computing	3	27-May-25	3-Aug-25	ON	STAFF	TCZ
16636	COM	1150	Z21	Public Speaking	3	27-May-25	3-Aug-25	ON	STAFF	TCZ
16638	COM	1250	Z21	Interpersonal Comm: SS3	3	27-May-25	3-Aug-25	ON	STAFF	TCZ
16757	COM	1150	Z41	Public Speaking	3	16-Jun-25	3-Aug-25	ON	STAFF	TCZ
16747	COM	1250	Z41	Interpersonal Comm: SS3	3	16-Jun-25	3-Aug-25	ON	STAFF	TCZ
16938	CRJ	1010	Z41	Intro to Criminal Justice: SS3	3	16-Jun-25	3-Aug-25	ON	STAFF	TCZ
16637	CRJ	1010	Z21	Intro to Criminal Justice: SS3	3	27-May-25	3-Aug-25	ON	STAFF	TCZ
16639	CRJ	1025	Z21	Policing Systems	3	27-May-25	3-Aug-25	ON	STAFF	TCZ
16641	CRJ	1045	Z21	Correctional Process	3	27-May-25	3-Aug-25	ON	STAFF	TCZ
16642	CRJ	2005	Z21	Principles of Criminal Law	3	27-May-25	3-Aug-25	ON	STAFF	TCZ
16644	CRJ	2030	Z21	Criminology	3	27-May-25	3-Aug-25	ON	STAFF	TCZ
16734	CRJ	2057	Z21	Victimology	3	27-May-25	3-Aug-25	ON	STAFF	TCZ
17176	CRJ	2057	R11	Victimology	3	16-Jun-25	3-Aug-25	RM	STAFF	TRZ
16735	CSC	1005	Z21	Computer Literacy	3	27-May-25	3-Aug-25	ON	STAFF	TCZ
16800	CSC	1019	Z21	Intro. to Programming: Python	3	27-May-25	3-Aug-25	ON	STAFF	TCZ
16939	CSC	1060	Z21	Computer Science I: C++	4	27-May-25	3-Aug-25	ON	STAFF	TCZ
16645	CSC	1060	Z22	Computer Science I: Java	4	27-May-25	3-Aug-25	ON	STAFF	TCZ
16646	CSC	1061	Z21	Computer Sci II: C++	4	27-May-25	3-Aug-25	ON	STAFF	TCZ
16940	CSC	1061	Z22	Computer Sci II: Java	4	27-May-25	3-Aug-25	ON	STAFF	TCZ
16782	CSC	2030	Z21	C Programming: Platform	3	27-May-25	3-Aug-25	ON	STAFF	TCZ
16647	CSC	2040	Z21	Java Programming	3	27-May-25	3-Aug-25	ON	STAFF	TCZ
16648	ECE	1011	Z21	Intro to Early Childhood Educ	3	27-May-25	3-Aug-25	ON	STAFF	TCZ
16649	ECE	1031	Z21	Guidance Strategies Yng Child	3	27-May-25	3-Aug-25	ON	STAFF	TCZ
16650	ECE	1111	Z21	Infant/Toddler Theory/Practice	3	27-May-25	3-Aug-25	ON	STAFF	TCZ
16651	ECE	2051	Z21	ECE Nutrition/Health/Safety	3	27-May-25	3-Aug-25	ON	STAFF	TCZ
16830	ECE	2101	Z21	Working w/Families & Communs	3	27-May-25	3-Aug-25	ON	STAFF	TCZ
16654	ECE	2381	Z21	ECE Child Growth & Development	3	27-May-25	3-Aug-25	ON	STAFF	TCZ
16946	ECE	2381	Z41	ECE Child Growth & Development	3	16-Jun-25	3-Aug-25	ON	STAFF	TCZ
16655	ECE	2401	Z21	Admin of ECE Programs	3	27-May-25	3-Aug-25	ON	STAFF	TCZ
16656	ECE	2411	Z21	Admin:Human Relations ECE	3	27-May-25	3-Aug-25	ON	STAFF	TCZ
16657	ECE	2601	Z21	The Exceptional Child	3	27-May-25	3-Aug-25	ON	STAFF	TCZ
16652	ECE	2621	Z21	Curriculum Methods/Techniques	3	27-May-25	3-Aug-25	ON	STAFF	TCZ
16653	ECE	2641	Z21	Creativity and the Young Child	3	27-May-25	3-Aug-25	ON	STAFF	TCZ
16658	ECO	2001	Z21	Prin of Macroeconomics: SS1	3	27-May-25	3-Aug-25	ON	STAFF	TCZ
16659	ECO	2002	Z21	Prin of Microeconomics: SS1	3	27-May-25	3-Aug-25	ON	STAFF	TCZ
16783	ECO	2001	Z41	Prin of Macroeconomics: SS1	3	16-Jun-25	3-Aug-25	ON	STAFF	TCZ
16951	ECO	2002	Z41	Prin of Microeconomics: SS1	3	16-Jun-25	3-Aug-25	ON	STAFF	TCZ
16761	EDU	2221	Z21	Effective Teaching	1	27-May-25	3-Aug-25	ON	STAFF	TCZ
16860	ENG	94	Z29	Studio 1021	3	27-May-25	3-Aug-25	ON	STAFF	TCZ
16661	ENG	1021	Z21	English Composition I:CO1	3	27-May-25	3-Aug-25	ON	STAFF	TCZ
16748	ENG	1021	Z29	English Composition I:CO1	3	27-May-25	3-Aug-25	ON	STAFF	TCZ
16662	ENG	1022	Z21	English Composition II:CO2	3	27-May-25	3-Aug-25	ON	STAFF	TCZ
16862	ENG	1031	Z21	Technical Writing I: CO1	3	27-May-25	3-Aug-25	ON	STAFF	TCZ
16663	ENG	2021	Z21	Creative Writing I: AH1	3	27-May-25	3-Aug-25	ON	STAFF	TCZ
16952	ENG	2021	Z41	Creative Writing I: AH1	3	16-Jun-25	3-Aug-25	ON	STAFF	TCZ
16760	ENG	1021	Z41	English Composition I:CO1	3	16-Jun-25	3-Aug-25	ON	STAFF	TCZ
16749	ENG	1022	Z41	English Composition II:CO2	3	16-Jun-25	3-Aug-25	ON	STAFF	TCZ
16954	ENV	1010	Z41	Natural Disasters: SC2	3	16-Jun-25	3-Aug-25	ON	STAFF	TCZ
16953	ENV	1010	Z21	Natural Disasters: SC2	3	27-May-25	3-Aug-25	ON	STAFF	TCZ
16664	ENV	1111	Z21	Environmental Sci w/Lab: SC1	4	27-May-25	3-Aug-25	ON	STAFF	TCZ

COLORADO ONLINE SUMMER 2025 CLASS LIST (continued)

#CRN	SUB	CORS	SEC	COURSE DESCRIPTION	HRS	START	END	SECT	INST	CAMPUS
16665	FRE	1011	Z21	French Language I	5	27-May-25	3-Aug-25	ON	STAFF	TCZ
16668	GEO	1005	Z21	World Regional Geography: SS2	3	27-May-25	3-Aug-25	ON	STAFF	TCZ
16785	GEO	1005	Z41	World Regional Geography: SS2	3	16-Jun-25	3-Aug-25	ON	STAFF	TCZ
16669	GEO	1006	Z21	Human Geography: SS2	3	27-May-25	3-Aug-25	ON	STAFF	TCZ
16955	GEO	1006	Z41	Human Geography: SS2	3	16-Jun-25	3-Aug-25	ON	STAFF	TCZ
16671	GEY	1111	Z21	Physical Geology w/Lab: SC1	4	27-May-25	3-Aug-25	ON	STAFF	TCZ
16956	GEY	1111	Z41	Physical Geology w/Lab: SC1	4	16-Jun-25	3-Aug-25	ON	STAFF	TCZ
16674	HIS	1110	Z21	The World: Antiquity-1500: HI1	3	27-May-25	3-Aug-25	ON	STAFF	TCZ
16957	HIS	1110	Z41	The World: Antiquity-1500: HI1	3	16-Jun-25	3-Aug-25	ON	STAFF	TCZ
16675	HIS	1120	Z21	The World: 1500-Present: HI1	3	27-May-25	3-Aug-25	ON	STAFF	TCZ
16958	HIS	1120	Z41	The World: 1500-Present: HI1	3	16-Jun-25	3-Aug-25	ON	STAFF	TCZ
16739	HIS	1210	Z21	US History to Reconst: HI1	3	27-May-25	3-Aug-25	ON	STAFF	TCZ
16750	HIS	1210	Z41	US History to Reconst: HI1	3	16-Jun-25	3-Aug-25	ON	STAFF	TCZ
16765	HIS	1220	Z21	US History since Civil War:HI1	3	27-May-25	3-Aug-25	ON	STAFF	TCZ
16672	HIS	1310	Z21	Western Civ:Antiquity-1650 HI1	3	27-May-25	3-Aug-25	ON	STAFF	TCZ
16959	HIS	1310	Z41	Western Civ:Antiquity-1650 HI1	3	16-Jun-25	3-Aug-25	ON	STAFF	TCZ
16673	HIS	1320	Z21	Western Civ: 1650-Present: HI1	3	27-May-25	3-Aug-25	ON	STAFF	TCZ
16960	HIS	2015	Z21	20th Century World History:HI1	3	27-May-25	3-Aug-25	ON	STAFF	TCZ
16961	HIS	2015	Z41	20th Century World History:HI1	3	16-Jun-25	3-Aug-25	ON	STAFF	TCZ
17148	HIS	2105	Z21	Women in U.S. History: HI1	3	27-May-25	3-Aug-25	ON	STAFF	TCZ
16676	HIS	2135	Z21	Colorado History: HI1	3	27-May-25	3-Aug-25	ON	STAFF	TCZ
16751	HIS	2135	Z41	Colorado History: HI1	3	16-Jun-25	3-Aug-25	ON	STAFF	TCZ
16786	HIS	1220	Z41	US History since Civil War:HI1	3	16-Jun-25	3-Aug-25	ON	STAFF	TCZ
16962	HPR	1010	Z21	Dietary Nutrition	1	27-May-25	3-Aug-25	ON	STAFF	TCZ
16963	HPR	1010	Z41	Dietary Nutrition	1	16-Jun-25	3-Aug-25	ON	STAFF	TCZ
16964	HPR	1039	Z21	Medical Terminology	2	27-May-25	3-Aug-25	ON	STAFF	TCZ
16965	HPR	1039	Z41	Medical Terminology	2	16-Jun-25	3-Aug-25	ON	STAFF	TCZ
16966	HPR	1040	Z21	Comprehensive Medical Terminol	3	27-May-25	3-Aug-25	ON	STAFF	TCZ
16967	HPR	1040	Z41	Comprehensive Medical Terminol	3	16-Jun-25	3-Aug-25	ON	STAFF	TCZ
16677	HUM	1015	Z21	World Mythology: AH2	3	27-May-25	3-Aug-25	ON	STAFF	TCZ
16774	HUM	1015	Z41	World Mythology: AH2	3	16-Jun-25	3-Aug-25	ON	STAFF	TCZ
16678	HUM	1021	Z21	Humanities: Early Civ: AH2	3	27-May-25	3-Aug-25	ON	STAFF	TCZ
16968	HUM	1021	Z41	Humanities: Early Civ: AH2	3	16-Jun-25	3-Aug-25	ON	STAFF	TCZ
16679	HUM	1022	Z21	Humanities: Mediev-Mod: AH2	3	27-May-25	3-Aug-25	ON	STAFF	TCZ
16680	HUM	1023	Z21	Humanities: Modern Wrld: AH2	3	27-May-25	3-Aug-25	ON	STAFF	TCZ
17100	HWE	1050	XC1	Human Nutrition	3	16-Jun-25	3-Aug-25	ON	STAFF	TCX
16752	HWE	1050	Z21	Human Nutrition	3	27-May-25	3-Aug-25	ON	STAFF	TCZ
16969	HWE	1050	Z41	Human Nutrition	3	16-Jun-25	3-Aug-25	ON	STAFF	TCZ
16775	LIT	1015	Z21	Intro to Literature I: AH2	3	27-May-25	3-Aug-25	ON	STAFF	TCZ
17149	LIT	2001	Z21	World Lit to 1600: AH2	3	27-May-25	3-Aug-25	ON	STAFF	TCZ
16743	LIT	2002	Z21	World Lit After 1600: AH2	3	27-May-25	3-Aug-25	ON	STAFF	TCZ
17150	LIT	2011	Z21	Amer Lit to Civil War: AH2	3	27-May-25	3-Aug-25	ON	STAFF	TCZ
16683	LIT	2012	Z21	Amer Lit Aft Civil War: AH2	3	27-May-25	3-Aug-25	ON	STAFF	TCZ
16684	LIT	2055	Z21	Children's Literature: AH2	3	27-May-25	3-Aug-25	ON	STAFF	TCZ
16685	MAN	2000	Z21	Human Resource Management I	3	27-May-25	3-Aug-25	ON	STAFF	TCZ
17151	MAN	2016	Z21	Small Business Management	3	27-May-25	3-Aug-25	ON	STAFF	TCZ
16687	MAN	2026	Z21	Principles of Management	3	27-May-25	3-Aug-25	ON	STAFF	TCZ
16789	MAN	2026	Z41	Principles of Management	3	16-Jun-25	3-Aug-25	ON	STAFF	TCZ
16688	MAR	1011	Z21	Principles of Sales	3	27-May-25	3-Aug-25	ON	STAFF	TCZ
16768	MAR	1060	Z21	Customer Service	3	27-May-25	3-Aug-25	ON	STAFF	TCZ
16791	MAR	1060	Z41	Customer Service	3	16-Jun-25	3-Aug-25	ON	STAFF	TCZ
16689	MAR	2016	Z21	Principles of Marketing	3	27-May-25	3-Aug-25	ON	STAFF	TCZ
17152	MAT	200	Z29	Algebraic Literacy Support	1	27-May-25	3-Aug-25	ON	STAFF	TCZ
17155	MAT	250	Z21	Quantitative Literacy	4	27-May-25	3-Aug-25	ON	STAFF	TCZ

COLORADO ONLINE SUMMER 2025 CLASS LIST (continued)

#CRN	SUB	CORS	SEC	COURSE DESCRIPTION	HRS	START	END	SECT	INST	CAMPUS
17154	MAT	300	Z21	Algebraic Literacy	4	27-May-25	3-Aug-25	ON	STAFF	TCZ
17153	MAT	300	Z29	Algebraic Literacy	4	27-May-25	3-Aug-25	ON	STAFF	TCZ
17156	MAT	1120	Z21	Math for Clinical Calculations	3	27-May-25	3-Aug-25	ON	STAFF	TCZ
17157	MAT	1140	Z21	Career Math:	3	27-May-25	3-Aug-25	ON	STAFF	TCZ
17158	MAT	1160	Z21	Financial Mathematics	3	27-May-25	3-Aug-25	ON	STAFF	TCZ
17159	MAT	1220	Z21	Integrated Math I: MA1	3	27-May-25	3-Aug-25	ON	STAFF	TCZ
17160	MAT	1230	Z21	Integrated Math II: MA1	3	27-May-25	3-Aug-25	ON	STAFF	TCZ
17161	MAT	1240	Z21	Math for Liberal Arts: MA1	4	27-May-25	3-Aug-25	ON	STAFF	TCZ
17162	MAT	1260	Z21	Intro to Statistics: MA1	3	27-May-25	3-Aug-25	ON	STAFF	TCZ
17163	MAT	1320	Z21	Finite Mathematics: MA1	4	27-May-25	3-Aug-25	ON	STAFF	TCZ
17164	MAT	1340	Z21	College Algebra: MA1	4	27-May-25	3-Aug-25	ON	STAFF	TCZ
16695	MAT	1400	Z21	Survey of Calculus: MA1	4	27-May-25	3-Aug-25	ON	STAFF	TCZ
16694	MAT	1420	Z21	College Trigonometry: MA1	3	27-May-25	3-Aug-25	ON	STAFF	TCZ
16699	MAT	1440	Z21	Pre-Calculus: MA1	5	27-May-25	3-Aug-25	ON	STAFF	TCZ
16700	MAT	2410	Z21	Calculus I: MA1	5	27-May-25	3-Aug-25	ON	STAFF	TCZ
16701	MAT	2420	Z21	Calculus II : MA1	5	27-May-25	3-Aug-25	ON	STAFF	TCZ
16702	MAT	2430	Z21	Calculus III: MA1	4	27-May-25	3-Aug-25	ON	STAFF	TCZ
16971	MAT	2431	Z21	Calculus III/Engineer App: MA1	5	27-May-25	3-Aug-25	ON	STAFF	TCZ
16793	MAT	2560	Z21	Differential Equations: MA1	3	27-May-25	3-Aug-25	ON	STAFF	TCZ
16703	MGD	1002	Z21	Introduction To Multimedia	3	27-May-25	3-Aug-25	ON	STAFF	TCZ
16704	MGD	1011	Z21	Adobe Photoshop I	3	27-May-25	3-Aug-25	ON	STAFF	TCZ
16705	MGD	1012	Z21	Adobe Illustrator I	3	27-May-25	3-Aug-25	ON	STAFF	TCZ
16732	MGD	1013	Z21	Adobe InDesign	3	27-May-25	3-Aug-25	ON	STAFF	TCZ
16794	MGD	1041	Z21	Web Design I	3	27-May-25	3-Aug-25	ON	STAFF	TCZ
16706	MUS	1000	Z21	Music Theory Fundamentals I	3	27-May-25	3-Aug-25	ON	STAFF	TCZ
16707	MUS	1020	Z21	Music Appreciation: AH1	3	27-May-25	3-Aug-25	ON	STAFF	TCZ
16733	MUS	1025	Z21	History of Jazz: AH1	3	27-May-25	3-Aug-25	ON	STAFF	TCZ
16708	PHI	1011	Z21	Intro to Philosophy: AH3	3	27-May-25	3-Aug-25	ON	STAFF	TCZ
16753	PHI	1011	Z41	Intro to Philosophy: AH3	3	16-Jun-25	3-Aug-25	ON	STAFF	TCZ
16709	PHI	1012	Z21	Ethics:AH3	3	27-May-25	3-Aug-25	ON	STAFF	TCZ
16978	PHI	1012	Z41	Ethics:AH3	3	16-Jun-25	3-Aug-25	ON	STAFF	TCZ
16710	PHI	1013	Z21	Logic: AH3	3	27-May-25	3-Aug-25	ON	STAFF	TCZ
16829	PHI	1013	Z41	Logic: AH3	3	16-Jun-25	3-Aug-25	ON	STAFF	TCZ
16763	PHI	1014	Z21	Comparative Religions: AH3	3	27-May-25	3-Aug-25	ON	STAFF	TCZ
16711	PHI	1015	Z21	World Religions-West: AH3	3	27-May-25	3-Aug-25	ON	STAFF	TCZ
16764	PHI	2005	Z21	Business Ethics: AH3	3	27-May-25	3-Aug-25	ON	STAFF	TCZ
16979	PHI	2005	Z41	Business Ethics: AH3	3	16-Jun-25	3-Aug-25	ON	STAFF	TCZ
16795	PHI	2014	Z21	Philosophy of Religion: AH3	3	27-May-25	3-Aug-25	ON	STAFF	TCZ
16769	PHI	2018	Z21	Environmental Ethics: GT-AH3	3	27-May-25	3-Aug-25	ON	STAFF	TCZ
16713	PHY	1105	Z21	Conceptual Physics w/Lab: SC1	4	27-May-25	3-Aug-25	ON	STAFF	TCZ
16714	PHY	1111	Z21	Physics Alg-Based I/Lab: SC1	5	27-May-25	3-Aug-25	ON	STAFF	TCZ
16715	PHY	1112	Z21	Physics Alg-Based II/Lab: SC1	5	27-May-25	3-Aug-25	ON	STAFF	TCZ
17165	PHY	2111	Z21	Physics Calc-Based I/Lab: SC1	5	27-May-25	3-Aug-25	ON	STAFF	TCZ
17166	PHY	2112	Z21	Physics Calc-Based II/Lab: SC1	5	27-May-25	3-Aug-25	ON	STAFF	TCZ
16881	PSC	1011	Z21	American Government: SS1	3	27-May-25	3-Aug-25	ON	STAFF	TCZ
16885	PSC	2020	Z21	Intro to Political Science:SS1	3	27-May-25	3-Aug-25	ON	STAFF	TCZ
16716	PSY	1001	Z21	General Psychology I: SS3	3	27-May-25	3-Aug-25	ON	STAFF	TCZ
16754	PSY	1001	Z41	General Psychology I: SS3	3	16-Jun-25	3-Aug-25	ON	STAFF	TCZ
16717	PSY	1002	Z21	General Psychology II : SS3	3	27-May-25	3-Aug-25	ON	STAFF	TCZ
16797	PSY	1002	Z41	General Psychology II : SS3	3	16-Jun-25	3-Aug-25	ON	STAFF	TCZ
16772	PSY	2107	Z21	Human Sexuality: SS3	3	27-May-25	3-Aug-25	ON	STAFF	TCZ
16718	PSY	2221	Z21	Social Psychology: SS3	3	27-May-25	3-Aug-25	ON	STAFF	TCZ
16799	PSY	2221	Z41	Social Psychology: SS3	3	16-Jun-25	3-Aug-25	ON	STAFF	TCZ
16770	PSY	2222	Z21	Psychology of Death/Dying: SS3	3	27-May-25	3-Aug-25	ON	STAFF	TCZ
16719	PSY	2440	Z21	Human Growth & Developmnt: SS3	3	27-May-25	3-Aug-25	ON	STAFF	TCZ
16755	PSY	2440	Z41	Human Growth & Developmnt: SS3	3	16-Jun-25	3-Aug-25	ON	STAFF	TCZ
16720	PSY	2441	Z21	Child Development: SS3	3	27-May-25	3-Aug-25	ON	STAFF	TCZ
16982	PSY	2441	Z41	Child Development: SS3	3	16-Jun-25	3-Aug-25	ON	STAFF	TCZ

COLORADO ONLINE SUMMER 2025 CLASS LIST (continued)

#CRN	SUB	CORS	SEC	COURSE DESCRIPTION	HRS	START	END	SECT	INST	CAMPUS
16721	PSY	2552	Z21	Psychopathology: SS3	3	27-May-25	3-Aug-25	ON	STAFF	TCZ
16983	PSY	2552	Z41	Psychopathology: SS3	3	16-Jun-25	3-Aug-25	ON	STAFF	TCZ
16723	SCI	1055	Z21	Integrated Sci I w/Lab: SC1	4	27-May-25	3-Aug-25	ON	STAFF	TCZ
16738	SCI	1056	Z21	Integrated Sci II w/Lab: SC1	4	27-May-25	3-Aug-25	ON	STAFF	TCZ
16810	SCI	1105	Z21	Science in Society: SC2	3	27-May-25	3-Aug-25	ON	STAFF	TCZ
16724	SOC	1001	Z21	Intro to Sociology I : GT-SS3	3	27-May-25	3-Aug-25	ON	STAFF	TCZ
16756	SOC	1001	Z41	Intro to Sociology I : GT-SS3	3	16-Jun-25	3-Aug-25	ON	STAFF	TCZ
16725	SOC	1002	Z21	Intro to Sociology II: SS3	3	27-May-25	3-Aug-25	ON	STAFF	TCZ
16771	SOC	2005	Z21	Soc Of Family Dynamics:SS3	3	27-May-25	3-Aug-25	ON	STAFF	TCZ
16726	SOC	2031	Z21	Soc-Deviant Behavior: GT-SS3	3	27-May-25	3-Aug-25	ON	STAFF	TCZ
16984	SOC	2031	Z41	Soc-Deviant Behavior: GT-SS3	3	16-Jun-25	3-Aug-25	ON	STAFF	TCZ
16727	SPA	1011	Z21	Spanish Language I	5	27-May-25	3-Aug-25	ON	STAFF	TCZ
16728	SPA	1012	Z21	Spanish Language II	5	27-May-25	3-Aug-25	ON	STAFF	TCZ
16729	SPA	2011	Z21	Spanish Language III: AH4	3	27-May-25	3-Aug-25	ON	STAFF	TCZ
16730	SPA	2012	Z21	Spanish Language IV: AH4	3	27-May-25	3-Aug-25	ON	STAFF	TCZ
16843	THE	1005	Z21	Theatre Appreciation: AH1	3	27-May-25	3-Aug-25	ON	STAFF	TCZ

STATEWIDE GUARANTEED TRANSFER

CRN	Title				
AGE 102	Agriculture Economics	GT-SS1	ECO 211	Gender in the Economy	GT-SS1
AGR 260	World Interdependence: Pop & Food	GT-SS3	ECO 245	Environmental Economics	GT-SS1
AGY 240	Introductory Soil Science, with Lab	GT-SC1	ENG 121	English Composition I	GT-CO1
ANT 101	Cultural Anthropology	GT-SS3	ENG 122	English Composition II	GT-CO2
ANT 102	Cultural Anthropology Laboratory	GT-SS3	ENG 201	Eng. Comp III: Writing for Pub. Discourse	GT-CO3
ANT 103	Archaeology Laboratory	GT-SS3	ENV 101	Intro to Env. Science, with Lab	GT-SC1
ANT 104	Physical Anthropology Laboratory	GT-SS3	ENV 110	Natural Disasters	GT-SC2
ANT 107	Introduction to Archaeology	GT-SS3	ETH 200	Introduction to Ethnic Studies	GT-SS3
ANT 108	Archaeology of World Rock Art	GT-SS3	FRE 211	French Language III	GT-AH4
ANT 111	Physical Anthropology	GT-SC1	FRE 212	French Language IV	GT-AH4
ANT 201	INTRO to Forensic Anthropology	GT-SS3	GEO 105	World Regional Geography	GT-SS2
ANT 215	Indians of North America	GT-SS3	GEO 106	Human Geography	GT-SS2
ANT 250	Medical Anthropology	GT-SS3	GEO 111	POHl Geography - Landforms, with Lab	GT-SC1
ART 110	Art Appreciation	GT-AH1	GEO 112	POHl Geography-Weather & Climate/ Lab	GT-SC1
ART 111	Art History Ancient to Medieval	GT-AH1	GER 211	German Language III	GT-AH4
ART 112	Art History Renaissance to Modern	GT-AH1	GER 212	German Language IV	GT-AH4
ART 207	Art History - 1900 to Present	GT-AH1	GEY 108	Geology of U.S. National Parks	GT-SC2
AST 101	Astronomy I, with Lab	GT-SC1	GEY 111	Physical Geology, with Lab	GT-SC1
AST 102	Astronomy II, with Lab	GT-SC1	GEY 112	Historical Geology, with Lab	GT-SC1
AST 150	Astrobiology	GT-SC2	GEY 135	Environmental Geology, with Lab	GT-SC1
AST 155	Astronomy Ancient Cultures	GT-SC2	HIS 101	Western Civilization: Antiquity - 1650	GT-HI1
AST 160	Cosmology	GT-SC2	HIS 102	Western Civilization: 1650 - Present	GT-HI1
BIO 103	Principles of Animal Biology	GT-SC2	HIS 111	The World: Antiquity - 1500	GT-HI1
BIO 104	Biology: A Human Approach	GT-SC1	HIS 112	World Civilization II	GT-HI1
BIO 105	Science of Biology, with Lab	GT-SC1	HIS 121	U.S. History to Reconstruction	GT-HI1
BIO 111	General College Biology I. with Lab	GT-SC1	HIS 122	U.S. History Since the Civil War	GT-HI1
BIO 112	General College Biology II, with Lab	GT-SC1	HIS 203	Civil War Era in American History	GT-HI1
BIO 116	Introduction to Human Disease	GT-SC2	HIS 205	Women in World History	GT-HI1
BIO 201	Anatomy & Physiology I, with Lab	GT-SC1	HIS 207	American Environmental History	GT-HI1
BIO 202	Anatomy & Physiology II, with Lab	GT-SC1	HIS 208	American Indian History	GT-HI1
BIO 204	Microbiology, with Lab	GT-SC1	HIS 215	Women in U.S. History	GT-HI1
BIO 208	Gen. College Microbiology, with Lab	GT-SC1	HIS 218	History of Science and Technology	GT-HI1
BIO 220	General Zoology, with Lab	GT-SC1	HIS 225	Colorado History	GT-HI1
BIO 221	Botany, with Lab	GT-SC1	HIS 235	History of the American West	GT-HI1
BIO 224	Genetics	GT-SC1	HIS 236	U.S. History Since 1945	GT-HI1
CHE 101	Introduction to Chemistry I, with Lab	GT-SC1	HIS 243	History of Modern China	GT-HI1
CHE 102	Introduction to Chemistry II, with Lab	GT-SC1	HIS 244	History of Latin America	GT-HI1
CHE 105	Chemistry in Context, with Lab	GT-SC1	HIS 245	U.S. in the World	GT-HI1
CHE 111	General College Chemistry I, with Lab	GT-SC1	HIS 247	20th Century World History	GT-HI1
CHE 112	General College Chemistry II, with Lab	GT-SC1	HIS 249	History of Islamic Civilization	GT-HI1
COM 220	Inter-cultural Communication	GT-SS3	HIS 250	African American History	GT-HI1
CRJ 110	Introduction to Criminal Justice	GT-SS3	HIS 251	History of Christianity in the World	GT-HI1
DAN 125	History of Dance I	GT-AH1	HIS 255	The Middle Ages	GT-HI1
ECO 101	Economics of Social Issues	GT-SS1	HIS 259	Modern Middle East	GT-HI1
ECO 201	Principles of Macroeconomics	GT-SS1	HIS 260	U S Foreign Relations History	GT-HI1
ECO 202	Principles of Microeconomics	GT-SS1	HIS 265	Writing About History	GT-CO3
			HUM 103	Introduction to Film Art	GT-AH2

STATEWIDE GUARANTEED TRANSFER (continued)

HUM 115	World Mythology	GT-AH2	PHY 105	Conceptual Physics, with Lab	GT-SC1
HUM 121	Humanities: Early Civilization	GT-AH2	PHY 107	Energy Science & Tech., with Lab	GT-SC1
HUM 122	Humanities: Medieval-Modern	GT-AH2	PHY 111	Physics: Algebra Based I, with Lab	GT-SC1
HUM 123	Humanities: Modern World	GT-AH2	PHY 112	Physics: Algebra Based II, with Lab	GT-SC1
ITA 211	Italian Language III	GT-AH4	PHY 211	Physics: Calculus Based I, with Lab	GT-SC1
ITA 212	Italian Language IV	GT-AH4	PHY 212	Physics: Calculus Based II, with Lab	GT-SC1
JOU 105	Introduction to Mass Media	GT-SS3	POS 105	Introduction to Political Science	GT-SS1
JPN 211	Japanese Language III	GT-AH4	POS 111	American Government	GT-SS1
JPN 212	Japanese Language IV	GT-AH4	POS 125	American State & Local Government	GT-SS1
LIT 115	Introduction to Literature I	GT-AH2	POS 205	International Relations	GT-SS1
LIT 201	World Literature to 1600	GT-AH2	POS 215	Current Political Issues	GT-SS1
LIT 202	World Literature After 1600	GT-AH2	POS 225	Comparative Government	GT-SS1
LIT 205	Ethnic Literature	GT-AH2	PSY 101	General Psychology I	GT-SS3
LIT 211	American Literature to Civil War	GT-AH2	PSY 102	General Psychology II	GT-SS3
LIT 212	American Literature After Civil War	GT-AH2	PSY 205	Psychology of Gender	GT-SS3
LIT 221	British Literature to 1700	GT-AH2	PSY 217	Human Sexuality	GT-SS3
LIT 222	British Literature Since 1700	GT-AH2	PSY 226	Social Psychology	GT-SS3
LIT 225	Introduction to Shakespeare	GT-AH2	PSY 227	Psychology of Death and Dying	GT-SS3
LIT 246	Literature of Women	GT-AH2	PSY 235	Human Growth & Development	GT-SS3
LIT 259	Survey of African American Literature	GT-AH2	PSY 238	Child Development	GT-SS3
LIT 268	Celtic Literature	GT-AH2	PSY 240	Health Psychology	GT-SS3
MAT 120	Mathematics for Liberal Arts	GT-MA1	PSY 249	Abnormal Psychology	GT-SS3
MAT 121	College Algebra	GT-MA1	PSY 265	Psychology of Personality	GT-SS3
MAT 122	College Trigonometry	GT-MA1	RUS 211	Russian Language III	GT-AH4
MAT 123	Finite Mathematics	GT-MA1	RUS 212	Russian Language IV	GT-AH4
MAT 125	Survey of Calculus	GT-MA1	SCI 105	Science in Society	GT-SC2
MAT 135	Introduction to Statistics	GT-MA1	SCI 155	Integrated Science I: Physics & Chemistry, with Lab	GT-SC1
MAT 166	Pre-Calculus	GT-MA1	SCI 156	Integrated Science II: Earth & Life Science, with Lab	GT-SC1
MAT 201	Calculus I	GT-MA1	SOC 101	Introduction to Sociology	GT-SS3
MAT 202	Calculus II	GT-MA1	SOC 102	Introduction to Sociology II	GT-SS3
MAT 203	Calculus III	GT-MA1	SOC 205	Sociology of Family Dynamics	GT-SS3
MAT 204	Calculus III/Engineering Apps	GT-MA1	SOC 207	Environmental Sociology	GT-SS3
MAT 215	Discrete Mathematics	GT-MA1	SOC 215	Contemporary Social Problems	GT-SS3
MAT 261	Diff Eq/with Engineering Apps	GT-MA1	SOC 216	Sociology of Gender	GT-SS3
MAT 265	Differential Equations	GT-MA1	SOC 218	Sociology of Diversity	GT-SS3
MET 150	General Meteorology, with Lab	GT-MA1	SOC 220	Sociology of Religion	GT-SS3
MUS 120	Music Appreciation	GT-AH1	SOC 231	Sociology of Deviant Behavior	GT-SS3
MUS 122	Music History: Early Romantic-Present	GT-AH1	SOC 237	Sociology of Death and Dying	GT-SS3
MUS 123	Survey of World Music	GT-AH1	SPA 211	Spanish Language III	GT-AH4
MUS 125	History of Jazz	GT-AH1	SPA 212	Spanish Language IV	GT-AH4
NRE 251	General Oceanography, with Lab	GT-SC1	THE 105	Theatre Appreciation	GT-AH1
PHI 111	Introduction to Philosophy	GT-AH3	THE 108	Theatre Script Analysis	GT-AH1
PHI 112	Ethics	GT-AH3	THE 211	Dev. of Theatre: Greek-Renaissance	GT-AH1
PHI 113	Logic	GT-AH3	THE 212	Dev. of Theatre: Restoration-Modern	GT-AH1
PHI 114	Comparative Religions	GT-AH3	THE 215	Playwriting	GT-AH1
PHI 115	World Religions West	GT-AH3	WST 200	Introduction to Women Studies	GT-SS3
PHI 116	World Religions East	GT-AH3	WST 225	Women and Social Action	GT-SS3
PHI 214	Philosophy of Religion	GT-AH3	WST 240	Goddesses & Women of the Anc. World	GT-SS3
PHI 218	Environmental Ethics	GT-AH3	WST 249	Women's Sexuality	GT-SS3
PHI 220	Philosophy of Death and Dying	GT-AH3			

GENERAL INFORMATION

SUMMER 2025

Semester Calendar

Please pay special attention to the dates that classes begin and end. Note that arriving late or leaving early may impact your grades.

Credit Hours

For Institutional Scholarships, students must be registered in 15 credit hours. Federal Financial Aid recognizes a student carrying 12 credit hours to be full time.

Arts and Sciences students may not take more than 18 credit hours without approval from the Dean of Instruction.

Course Cancellations

The College reserves the right to cancel programs or courses, to change instructors, and to change times or locations of classes. The Vice President of Academic Affairs will have current, up-to-date information on scheduled classes.

Drops, Withdrawals & Repeating a Course

It's important to know the drop and withdrawal dates for all your classes. The dates are listed on the academic calendar or your individual course syllabus. What's the difference between "drop" and "withdraw"? If you drop a class before the census date, you will not have a financial obligation and you will not use College Opportunity Fund (COF) credits. You can withdraw between the census and withdrawal dates. It won't affect your grade point average, however, you will have a financial obligation, and you will use COF credits.

It is the student's responsibility to drop or withdraw from classes. You can withdraw from courses for the semester you are enrolled in on the student portal. Look at your detailed class schedule available on the Student tab of your Trinidad State Portal for drop and withdraw deadlines specific to each class. It is recommended that you speak with an advisor prior to dropping or withdrawing from a course. It is important to check with the business and

financial aid offices regarding any outstanding balances and/or financial consequences.

If you are an online student, please call one of the advising lines at 719-846-5026 or 719-589-7296 or contact your advisor.

If you are on campus and wish to withdraw, you can do so by contacting your advisor or visiting the advising office on either campus.

If a student decides to withdraw from a class after the Census, but before the last 20% of the class, the grade will be recorded as a "W." A "W" is not counted in computing grade point averages. If a student withdraws during the last 20% of the class, a regular grade will be assigned that does count in computing grade point averages.

A student who earns a grade of D, F, or U may repeat the course once for the purpose of improving the grade point average (GPA). Both grades earned will be entered on the transcript; however, only the highest grade will be counted in calculating the cumulative grade point average. Duplicate credit is not granted for repeating a course.

Tuition Refunds

If a student officially drops from classes prior to the class Census date, there will be no financial obligation. If the student withdraws after the census date, they will be obligated for the cost of the class(es). The College reserves the right to cancel course offerings. Course cancellations will result in a refund of paid tuition.

Registration Deadline

The deadline for registering for classes is the first Friday of class or as designated in the TSC schedule.

Students requesting to register after the deadline date must obtain approval from the Dean of Instruction for late registration authorization.

Tuition Classification

Colorado law requires that students be classified as in-state or out-of-state for tuition

purposes. Tuition classification is based upon information supplied on the application for admission.

Students previously classified as out-of-state may have their classification changed through a Tuition Classification Petition process. Petitions and information concerning documentation may be obtained in the Trinidad campus Registrar's Office or the Valley Campus Admissions Office. Petition applications must be received by either the Registrar's Office or Admissions Office by the first Friday of class each semester. The tuition classification officer must request and maintain adequate documentation to support any applicant's claim for change in status. The policy for tuition classification is outlined in the Colorado Community College System (CCCS) System Procedure 4-40. For more information, go to <https://cccs.edu/policies-and-procedures/system-presidents-procedures/sp-4-40-in-state-tuition-classification/>.

Deadline:

Students have until the first Friday of each semester to submit a petition for change in Tuition Classification. Once the petition is submitted, the College will make a determination by census date.

Tuition Classification Appeal Procedure:

When a decision is rendered and the student is not in agreement with the decision, the student may appeal the decision to the "Student Affairs Committee" by contacting the Dean of Student Retention and Completion. The student will be required to present supporting documentation to a panel of institutional representatives for review and resolution. The student will be notified of the decision made by the appeals panel and the reasons behind the decision. The decision of the appeals committee is final.

Check Requirements

To earn a degree, students must satisfy all course and curriculum requirements for the program under which they are registered and attain a cumulative grade point average of 2.0 or higher.* (* Although a "D" is considered a passing grade, "D's" are not calculated as an earned course toward a degree.) In addition, basic skills courses do not count toward a

GENERAL INFORMATION (continued)

degree. Use the TSC Portal to access Degree Works. Degree Works is a tool available to all students. It provides information on degree progress, required courses and time to completion. Familiarize yourself with the provisions and regulations pertaining to your program. See an Advisor when in doubt. TSC will make every effort to assist you in meeting requirements for graduation.

Final responsibility, however, rests with the student.

If you have completed college courses at a location other than Trinidad State, an official transcript must be sent directly to Trinidad State from the institution where the credits were earned. College transcripts will be evaluated prior to registration to ascertain acceptable credits that apply to the student's program of study. Courses for which the student has earned a grade of "D" or "F" will not be accepted for credit. Students with a GPA below 1.5 may be admitted on academic probation.

In determining academic standing while attending TSC, the GPA of a transfer student is computed on the basis of credits attempted at Trinidad State College only and will not include credits and grade points earned at other colleges.

Up to 45 credits earned at regionally accredited colleges or universities or other approved educational institutions may be applied toward fulfilling TSC program requirements. Please contact the Registrar at 719-846-5550 for more information about accepted transfer credits.

Prior Learning Assessment

The Prior Learning Assessment program, or PLA program, allows students to earn credit for learning that occurs outside the sponsorship of accredited post-secondary education institutions. PLA is not awarded for experience but for college-level learning which entails knowledge, skills, and competencies that students have obtained as a result of their prior learning experiences. Contact the Registrar at 719-846-5550 for more information about how to be awarded prior learning credit.

Transfer of credit for vocational courses are determined by the Dean of Instruction. Contact the Dean at 719-846-5524 on the Trinidad

Campus or 719-589-7064 on the Valley Campus for more information about how to receive vocational course credit.

Residence Halls

There are four residence halls on the Trinidad Campus to house students. (One residence hall will be off-line during academic 2022-2023 for renovation.) The residence halls are staffed with housing employees and a support staff of residence assistants. Students living in the residence halls are required to have a meal plan through the dining hall. The food service company, Sodexo, strives to serve the students with a variety of menus, quality service, and unlimited seconds for most meals. For more information about housing go to: <https://trinidadstate.edu/residence-life/index.html>

Immunization Requirements

Colorado Law (Board of Health rule 6 CCR 1009-2) requires that all full-time students born after January 1, 1957 show proof of immunization against measles, mumps, and rubella. Students residing in student housing are also required to show proof of immunization against meningococcal disease and COVID-19 at the time of housing check in. Certification and waiver forms are available online on the Student Life Housing link under immunization link or at the Student Services Office. The COVID-19 vaccination is not required as a condition of enrollment at the College. The College will provide students with a list of local providers offering the COVID-19 vaccine at no cost.

Student Health Insurance

TSC does not require health insurance for non-athlete students. However, all student athletes must show proof of a student health insurance plan. Trinidad State encourages all students to carry health insurance. For information on student insurance, see the Student Services Office on your campus.

International Students are required to provide evidence of insurance in accordance with the International Student Application process.

TSC Notification System

The TSC Notification System provides text messages, phone messages and email

notices regarding campus closures, campus emergencies and student notifications.

TSC uses the notification system to communicate with the campus community in the event of a crisis, emergency or timely warning. To confirm accurate contact information, login to the TSC Portal and click on the Notify Me link.

Student Complaints

Students or prospective students who wish to file a complaint related to accreditation or grievance may submit a formal written Student Grievance in the Student Services Office of either campus, or at 600 Prospect Street, Berg Office 210, Trinidad, Colorado 81082, or by going online and filling out the form electronically at <https://trinidadstate.edu/students-current/complaints.html>

Complaints regarding accreditation can also be made by contacting the Higher Learning Commission 230 North La Salle Street, Suite 7-500, Chicago, IL 60604, telephone: 1-800-621-7440 <https://www.hlcommission.org/Students-Communities/complaints.html>

Military/Veterans and Their Families

Trinidad State College takes pride in being able to meet the educational needs of military service members, their families and veterans. The college is approved by the Colorado State Approving Agency for Veterans Education. Military tuition assistance, veteran's education benefits, and veteran's vocational rehabilitation are administered by the Financial Aid Office on both campuses.

Each semester, active duty military members and veterans and /or beneficiaries using or wanting to use educational benefits must report to the Financial Aid Office after completing the enrollment process. To maintain educational benefits in good standing students must immediately inform the Financial Aid Office if you:

- drop, add or audit classes;
- stop attending classes;
- have a class canceled, withdraw or are withdrawn from classes or the college;
- are unable to attend classes; or
- make any changes to your enrollment status.

GENERAL INFORMATION (continued)

TSC students using a military benefit must complete paperwork with the TSC Financial Aid Office each semester. To make an appointment to review your benefits, verification, intent to register or related questions, contact Financial Aid at 719-846-5017. For more information, visit the TSC website for Veteran Benefits or stop by the Financial Aid Office on your campus.

Student Bill of Rights

The Colorado Student Bill of Rights focuses on various aspects of student academic life including advising, transferability of credits, and degree completion.

One segment of the Student Bill of Rights notes that a student may formalize a plan to obtain a degree in two years. Trinidad State College supports this timeline for graduation by publishing program pathway guidelines under which a full-time student may expect to graduate or complete and provides degree checklists through the Degree Works tool on the student portal. Program pathways are available online at <https://trinidadstate.edu/pathways/> and degree check on the TSC portal.

There are some majors, which may require additional degree requirements as recognized by the Colorado Department of Higher Education. For more information, or to read the Colorado Student Bill of Rights, go to <https://cdhe.colorado.gov/what-student-bill-rights> or see your Advisor in the on either campus.

Student Rights/FERPA

The Family Educational Rights and Privacy Act (FERPA) of 1974 restricts the release of student information to the public without the consent of the student, except for directory information. Directory information includes name, major field of study, enrollment status, dates of enrollment, degrees and honors earned, participation in officially recognized activities and sports. Additional items for college athletes are height, weight and high school attended. The Solomon Amendment requires institutions receiving federal funds to provide additional directory information that includes address and phone number of enrolled students to the US Military. Directory information is limited to the current academic

year only. If a student does not wish TSC to release the directory information, a written request must be submitted in the Student Services Office before the end of the first week of classes. Your request will remain in effect until you formally cancel it. For more information, contact the Registrar directly at 719-846- 5550 for special accommodations.

Jeannie Clery Disclosure of Campus Security Policy and Campus Crime Statistics Act.

The Clery Act Disclosure and TSC Campus Crime Statistics are accessible on the TSC Website: <https://trinidadstate.edu/safe-campus/>. Hard copies are also available through the Student Services Office on each campus. Sexual assault protocols and victims' rights provisions are described on the safe campus link on the TSC website at <https://trinidadstate.edu/safe-campus/>. Victims are encouraged to report. Help is available.

Sex offender information is available at Colorado's Convicted Sex Offender website: <https://apps.colorado.gov/apps/dps/sor/>

Notification to the campus community will be sent following the confirmation of a significant emergency or dangerous situation involving an immediate threat to the health or safety of students or staff. TSC uses the Notify Me system for this notification.

In an emergency, Dial 911. Report crimes, violations, accidents, suspicious persons and incidents to the Campus Resource Officer on your campus or the Dean of Student Retention and Completion at 719-846-5458.

Return of Title IV Federal Financial Aid

When a Title IV Financial Aid recipient completely withdraws from TSC prior to the end of the term, a refund of the aid will be calculated. The calculation will be based on the number of days attended compared to the total number of days in the semester.

Withdrawal after 60% of the term is not subject to the return calculation. Aid used for tuition, fees, books, and room/board will be refunded by both the student and the College. For a complete outline of the return of the Title IV process please go to <https://trinidadstate.edu/fia/return4.html> or see the TSC Catalog.

Non-Discrimination

The College prohibits and will not tolerate discrimination or harassment that violates federal, state law, or Board Policy 3-120 or Board Policy 4-120. The College does not discriminate on the basis of gender (or gender identity), sex, race, color, age, creed, national or ethnic origin, genetic information, physical or mental disability, veteran status, pregnancy status, religion or sexual orientation.

The College complies with Titles VI and VII of the Civil Rights Act of 1964, the Civil Rights Act of 1991, the Education Amendments of 1972 (Title IX), the Age Discrimination in Employment Act, the Rehabilitation Act of 1973, the Americans with Disabilities Act, Pregnancy Discrimination Act of 1978, Vietnam Era Veterans Readjustment Assistance Act of 1974, Executive Order 11246, and sections 24-34- 301, C.R.S. et seq., The Genetic Information Nondiscrimination Act of 2008 (Pub.L. 110-233, 122 Stat. 881, enacted May 21, 2008, GINA).

For information regarding civil rights or grievance procedures, contact: Title IX Compliance/Equal Opportunity Officer. Yvette Atencio, Human Services Director, 600 Prospect Street, Trinidad, CO 81082 Phone: (719) 846-5538 or email yvette.atencio@trinidadstate.edu.

Complaints may also be filed with the Legal Affairs office of the Colorado Community College System, 9101 E. Lowry Blvd., Denver, Colorado 80230-6011; or the Office for Civil Rights, U.S. Department of Education, Region VIII, Federal Office Building, 1244 Speer Blvd., Suite 310, Denver, Colorado, 80204.

Disability Services

Reasonable accommodations for students will be provided upon request for persons with disabilities. In accordance with the Americans with Disabilities Act (ADA), Trinidad State College will provide accommodations for qualifying students with disabilities. To request an accommodation, contact the Special Populations Coordinator at 719-846-5624 on the Trinidad Campus Berg 209 or call 719-589-7067 on the Valley Campus Room 104.

GENERAL INFORMATION (continued)

State Authorization

Trinidad State College is currently working cooperatively with higher education authorities in all states and other U.S. jurisdictions to ensure compliance with state authorization requirements that govern the offering of courses in those states, including complaint processes.

Trinidad State College will continue to monitor developments in the jurisdictions in which it enrolls students, and, if authorization or licensure is or becomes necessary, it will obtain approvals or provide notice here of the jurisdictions in which it is not authorized to offer courses or programs.

Currently Trinidad State College has approval to offer courses in the following states:

Alabama, Alaska, Arkansas, Arizona, Colorado, Connecticut, Delaware, District of Columbia, Florida, Georgia, Hawaii, Idaho, Illinois, Iowa, Indiana, Kansas, Kentucky, Louisiana, Maine, Maryland, Michigan, Massachusetts, Minnesota, Mississippi, Missouri, Montana, Nebraska, Nevada, New Hampshire, New Jersey, New Mexico, New York, North Carolina, North Dakota, Oklahoma, Ohio, Oregon, Pennsylvania, Rhode Island, South Carolina, South Dakota, Tennessee, Texas, Utah, Vermont, Virginia, Washington, West Virginia, Wisconsin, and Wyoming.

Trinidad State College is currently NOT authorized to offer courses in the following states:

California

If you are not an on-campus student at Trinidad State College and plan to enroll in distance classes, please check the information provided above to verify that your state has either authorized or exempted our college to offer such classes or programs to you as a resident of that state.

If you reside in an "unauthorized" state and plan to take distance education classes, please note that we are not authorized or exempted to offer distance education classes or programs to you as a resident of an "unauthorized" state.

If you have questions or concerns, please contact the Registrar at 719-846-5550.

Smoking Policy

Smoking is prohibited in all College buildings as directed by the Governor's Executive Order D0036.90. Smoking is also prohibited within 25 feet of doorways and buildings.

Student Right-to-know

In accordance with Title I of Public Law 101-542, information about graduation, persistence and transfer rates are available on the TSC Website at <https://trinidadstate.edu/consumer/> or from the Office

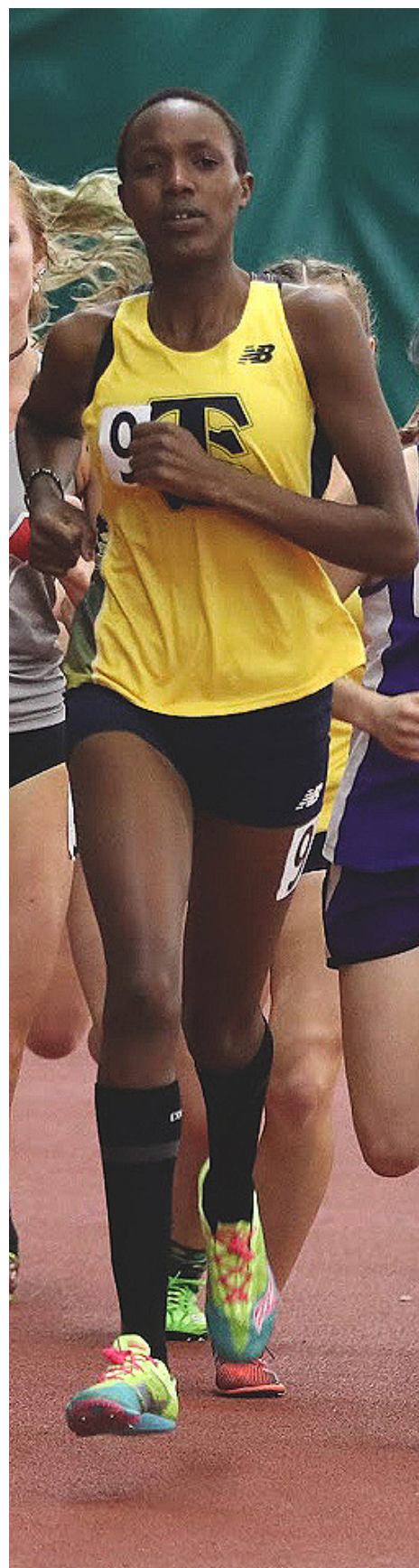
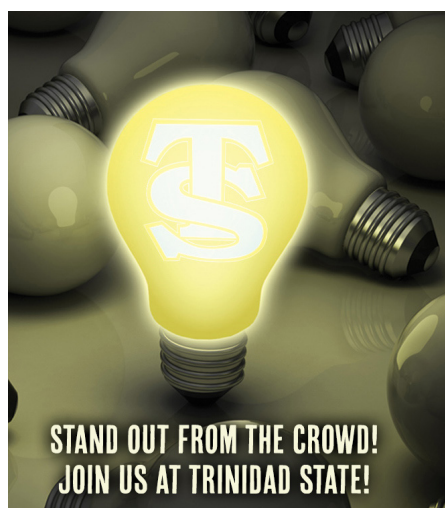
of Institutional Research; additional graduation data is also available at the Colorado Department of Higher Education Website.

Voter Registration Information

TSC fully supports and advocates that students and staff register to vote. Voter Registration forms are available on the Colorado Secretary of State Website at <https://www.coloradosos.gov/voter/pages/pub/home.xhtml>

Consumer Information

Federal regulations require Trinidad State to Provide consumer information to students, prospective students and the campus community about the college and financial aid. For a complete list of consumer information review: <https://trinidadstate.edu/consumer/>.



PHONE NUMBERS

Trinidad Campus

Emergency: 911

Campus Security using an on-campus telephone 9-719-680-2119

Campus Security using an off-campus telephone 719-680-2119

All numbers are Area Code 719

- Admissions : Berg 201, 846-5621
- Advising : Berg 209, 846-5026
- Athletic Director : Boyd 109, 846-5653
- Cashier/Business Office : Berg 209, 846-5547
- Dean of Instruction : Davis 118, 846-5524
- Dean of Instruction : Valley Campus, 589-7064
- Educational Opportunity Center (EOC) : Berg 201, 846-5689
- Human Resources : Berg 101, 846-5538
- Mail Room : Berg Bottom Floor, 846-5498
- Payroll : Berg 101, 846-5570
- Recruiter : Berg 201, 846-5599
- Residence Halls : 719-680-1520
- TRiO Student Support Services : Berg 209, 846-5624 (Academic Support, Advising, Financial Aid, Transfer, Tutoring, and more)
- Testing Center : Berg 201, 846-5657
- Adult Education/GED/ESL : Latuda Hall, 846-5640
- Affirmative Action : Berg 101, 846-5538
- Bookstore : Sullivan Center, 846-5610
- Computer (IT) Help Desk : Davis 202, 846-5663
- Dean of Student Retention & Completion : Berg 201, 846-5458
- Dining Hall : Sullivan Center, 846-5629
- Financial Aid : Berg 209, 846-5017
- Library : 846-5593
- Nursing Department : Davis 118, 846-5524
- Physical Plant : Banta 202, 846-5618
- Registrar : Berg 108, 846-5550
- Student Life : Berg 201, 846-5474
- Veterans Certifying Officer : Valley Campus 104, 589-7045

Valley Campus

Emergency: 911

Campus Security using an on-campus telephone 9-719-221-6398

Campus Security using an off-campus telephone 719-221-6398

All numbers are Area Code 719

- Admissions & Records : Main Room 104, 589-7026
- Advising : Main Room 104, 589-7296
- Comm. & Concurrent Ed : Main Room 202, 589-7064
- Career & Disability Services : Main Room 104, 589-7067
- Human Resources : Main Room 112, 846-5538
- Testing : Trinidad Campus Berg 201, 846-5657
- Tutoring : Main Room 104, 589-7063
- Adult Education/GED/ESL : Main Room 203, 589-7137
- Dean of Instruction : Main Room 202, 589-7064
- Cashier/Business Office : Main Room 104, 589-7026
- Financial Aid : Main Room 104, 589-7045
- Student Life : Trinidad Campus Berg 201, 846-5474
- TRiO Support Services : Main Room 104, 589-7063
- Veterans Certifying Officer : Main Room 104, 589-7045



2024-2025 COURSE SPECIFIC FEES

Course #	Course Name	Fee	Frequency	Explanation
ADE 1035	Small Gasoline Engines	\$22.80	Per Course	Shop supplies and waste disposal fees
AGE 1102	Agriculture Economics	\$10.61	Per Course	Course materials
AGE 2105	Farm and Ranch Management	\$10.61	Per Course	Course materials
AGE 2108	Agriculture Finance	\$10.61	Per Course	Course materials
AGE 2110	Agriculture Marketing	\$10.61	Per Course	Course materials
AGP 1007	Practical Irrigation Mgmt	\$10.61	Per Course	Course materials
AGP 1080	Production Ag Internship	\$10.61	Per Course	Course materials
AGY 1100	General Crop Production	\$10.61	Per Course	Course materials
AGY 2140	Intro Soil Science	\$10.61	Per Course	Course materials
ANT 1004	Archaeology Laboratory: GT-SS3	\$155.91	Per Course	Course materials
ART 1002	Visual Concepts in 2-D Design	\$28.09	Per Course	Course materials
ART 1003	Visual Concepts in 3-D Design	\$28.09	Per Course	Course materials
ART 1110	Art Appreciation: AH1	\$16.00	Per Course	Cost of Materials and Supplies
ART 1201	Drawing I	\$28.09	Per Course	Course materials
ART 1202	Drawing II	\$28.09	Per Course	Course materials
ART 1203	Figure Drawing I	\$28.09	Per Course	Course materials
ART 1301	Painting I	\$28.09	Per Course	Course materials
ART 1302	Painting II	\$28.09	Per Course	Course materials
ART 1501	Print Making	\$28.09	Per Course	Course materials
ART 1703	Ceramics I	\$28.09	Per Course	Course materials
ASC 1100	Animal Sciences	\$10.61	Per Course	Course materials
ASC 2105	Live Animal/Carcass Evaluation	\$31.20	Per Course	Course materials
ASC 2125	Feeds and Feeding	\$10.61	Per Course	Course materials
ASE 1001	Auto Shop Orientation	\$6.11	Per Course	Course materials
ASE 1002	Intro to the Automotive shop	\$6.11	Per Course	Course materials
ASE 1010	Brakes I	\$12.35	Per Course	Shop supplies and waste disposal fees
ASE 1011	Auto Brake II	\$12.35	Per Course	Shop supplies and waste disposal fees
ASE 1020	Basic Auto Electricity	\$6.11	Per Course	Course materials
ASE 1022	Auto Elec Safety Systems	\$6.11	Per Course	Course materials
ASE 1023	Starting & Charging Sys	\$6.11	Per Course	Course materials
ASE 1030	General Engine Diagnosis	\$12.35	Per Course	Shop supplies and waste disposal fees
ASE 1032	Ignition System Diag. & Repair	\$6.11	Per Course	Course materials
ASE 1034	Autofuel & emissions Syst I	\$12.35	Per Course	Shop supplies and waste disposal fees
ASE 1040	Steering and Suspension I	\$12.35	Per Course	Shop supplies and waste disposal fees
ASE 1041	Suspension and Steering II	\$12.35	Per Course	Shop supplies and waste disposal fees
ASE 1050	Man Drv Trn & Axle	\$12.35	Per Course	Shop supplies and waste disposal fees
ASE 1052	Man Trans/Transaxles/Clutch II	\$12.35	Per Course	Shop supplies and waste disposal fees
ASE 1060	Auto Engine Repair	\$12.35	Per Course	Shop supplies and waste disposal fees
ASE 1062	Auto Engine Service	\$12.35	Per Course	Shop supplies and waste disposal fees
ASE 2010	Auto Pwr/ABS Brake Systems	\$12.35	Per Course	Shop supplies and waste disposal fees
ASE 2021	Auto/Diesel Body Electrical	\$6.11	Per Course	Course materials
ASE 2031	Auto Comp & Ignition Sys	\$6.11	Per Course	Course materials
ASE 2033	Auto Fuel Injection /Emissions	\$12.35	Per Course	Shop supplies and waste disposal fees
ASE 2040	Suspension and Steering III	\$12.35	Per Course	Shop supplies and waste disposal fees
ASE 2050	Auto Trans/Transaxle Service	\$12.35	Per Course	Shop supplies and waste disposal fees
ASE 2051	Auto Trans/Transaxle Repair	\$12.35	Per Course	Shop supplies and waste disposal fees
ASE 2064	Intro to HVAC Systems	\$12.35	Per Course	Shop supplies and waste disposal fees
ASE 2065	HVAC Systems	\$12.35	Per Course	Shop supplies and waste disposal fees
AVT 1060	Introduction to Unmanned Aircraft Sy	\$78.80	Per Course	Course Materials/Transportation/Maintenance
BIO 1004	Biology: A Human Approach	\$36.40	Per Course	Expendable lab materials and cadavers
BIO 1005	Science of Biology w/Lab: SC1	\$21.22	Per Course	Expendable laboratory materials and cadavers
BIO 1052	Willife Biology	\$20.00	Per Course	Cost of supplies
BIO 1111	Gen College Biology I/Lab: SC1	\$26.52	Per Course	Expendable laboratory materials and cadavers
BIO 1112	Gen College Biology II/Lab: SC1	\$26.52	Per Course	Expendable laboratory materials and cadavers
BIO 2101	Human Anatomy&Phys w/Lab I: SC1	\$36.40	Per Course	Expendable laboratory materials and cadavers
BIO 2102	Human Anatomy&Phys w/Lab II: SC	\$36.40	Per Course	Expendable laboratory materials and cadavers
BIO 2104	Microbiology w/Lab: SC1	\$42.44	Per Course	Expendable laboratory materials and cadavers
BIO 2120	General Zoology w/Lab: SC1	\$28.36	Per Course	Expendable laboratory materials and cadavers
BIO 2121	Botany w/Lab: SC1	\$22.87	Per Course	Expendable laboratory materials and cadavers
BUS 1015	Introduction to Business	\$5.31	Per Course	workbook and course materials
BUS 2017	Business Communication/Report Wr	\$5.31	Per Course	workbook and course materials
CHE 1011	Introduction to Chemistry I	\$5.31	Per Course	lab supplies
CHE 1011	Introduction to Chemistry I	\$5.31	Per Course	chemical disposal
CHE 1011	Introduction to Chemistry I w/Lab: GT	\$27.82	Per Course	Course materials
CHE 1012	Introduction to Chemistry II	\$5.31	Per Course	lab supplies
CHE 1012	Introduction to Chemistry II	\$5.31	Per Course	chemical disposal

COURSE SPECIFIC FEES (continued)

Course #	Course Name	Fee	Frequency	Explanation
CHE 1012	Introduction to Chemistry II w/Lab: G	\$27.82	Per Course	Course materials
CHE 1111	Gen College Chem I/Lab: SC1	\$49.12	Per Course	Expendable laboratory materials
CHE 1112	Gen College Chem II/Lab: SC1	\$49.12	Per Course	Expendable laboratory materials
COS 1003	Shampoo/Rinses/Conditioners I	\$10.39	Per Course	Course materials
COS 1010	Introduction to Hair Coloring	\$10.39	Per Course	Course materials
COS 1011	Intermediate: Hair Coloring	\$10.39	Per Course	Course materials
COS 1030	Introduction to Hair Styling	\$10.39	Per Course	Course materials
COS 1031	Intermediate I Hair Styling	\$10.39	Per Course	Course materials
COS 1040	Introduction to Chemical Texture	\$10.39	Per Course	Course materials
COS 1041	Intermediate I Chemical Texture	\$10.39	Per Course	Course materials
COS 2003	Shampoos/Rinses/ Conditioners II	\$10.39	Per Course	Course materials
COS 2010	Intermediate II Hair Coloring	\$10.39	Per Course	Course materials
COS 2011	Advanced Hair Coloring	\$10.39	Per Course	Course materials
COS 2030	Intermediate II Hair Styling	\$10.39	Per Course	Course materials
COS 2031	Advanced Hair Styling	\$10.39	Per Course	Course materials
COS 2040	Intermediate II Chemical Texture	\$10.39	Per Course	Course materials
COS 2041	Advanced Chemical Texture	\$10.39	Per Course	Course materials
COS 2060	Inter II: Disinfe/Sanit/Safety	\$9.00	Per Course	Malpractice insurance
DEA 1023	Dental Assisting	\$220.54	Per Course	Course materials
DEA 1023	Dental Assisting	\$9.00	Per Course	Malpractice insurance
DPM 1003	Diesel Engines I	\$20.40	Per Course	Shop supplies and waste disposal fees
DPM 1005	Heavy Duty Powertrains I	\$20.40	Per Course	Shop supplies and waste disposal fees
DPM 1006	Diesel Fuel Systems	\$20.40	Per Course	Shop supplies and waste disposal fees
DPM 1021	Hydraulic Systems I	\$20.40	Per Course	Shop supplies and waste disposal fees
DPM 1022	Hydraulic Systems II	\$20.40	Per Course	Shop supplies and waste disposal fees
DPM 1077	Lab Experience I	\$20.40	Per Course	Shop supplies and waste disposal fees
DPM 2003	Diesel Engines II	\$20.40	Per Course	Shop supplies and waste disposal fees
DPM 2005	Heavy Duty Powertrains II	\$20.40	Per Course	Shop supplies and waste disposal fees
DPM 2006	Heavy Duty Brakes I	\$20.40	Per Course	Shop supplies and waste disposal fees
EIC 1102	Safety & Industry Certifications	\$127.50	Per Course	OSHA/Flagger Training
EIC 1103	Electrical Principles and Applied	\$72.76	Per Course	Math Course materials
EIC 1231	Overhead Power Systems	\$265.20	Per Course	Climbing poles
EIC 1232	Hotline Procedures	\$244.44	Per Course	Cost of materials
EMS 1021	EMT Fundamentals	\$9.00	Per Course	Malpractice insurance
EMS 1021	EMT Fundamentals	\$107.69	Per Course	Supplies
EMS 1125	AEMT Fundamentals	\$9.00	Per Course	Malpractice insurance
EMS 1125	AEMT Fundamentals	\$153.00	Per Course	Simulation maintenance and service
EMS 1125	AEMT Fundamentals	\$153.00	Per Course	Course materials
EMS 1132	EMT IV/IO	\$105.68	Per Course	Consumable supplies
EMS 2025	Paramedic Fundamentals	\$9.00	Per Course	Malpractice insurance
EMS 2025	Paramedic Fundamentals	\$153.00	Per Course	Course supplies
EMS 2025	Paramedic Fundamentals	\$204.00	Per Course	Tracking program for compliance for national
EMS 2025	Paramedic Fundamentals	\$459.00	Per Course	Simulation maintenance and service
EMS 2031	Paramedic Cardiology	\$459.00	Per Course	Simulation maintenance and service
ENG 1021	English Composition I : CO1	\$10.39	Per Course	Brainfuse online tutoring platform
EST 1010	Introduction to Facials and Skin	\$10.39	Per Course	Course materials
EST 1011	Intermediate Facials and Skin Care	\$10.39	Per Course	Course materials
EST 2010	Advanced Massage and Skin Care	\$10.39	Per Course	Course materials
EST 2011	Facial Make-up	\$10.39	Per Course	Course materials
EST 2012	Hair Removal	\$10.39	Per Course	Course materials
GUR 1001	NRA Home Firearm Safety Course	\$10.00	Per Course	Cost of range fees
GUR 1001	NRA Home Firearm Safety Course	\$12.47	Per Course	Cost of materials
GUR 1006	NRA Basic Pistol Shooting	\$10.00	Per Course	Cost of range fees
GUR 1006	NRA Basic Pistol Shooting	\$16.00	Per Course	Cost of materials
GUR 1007	NRA Basic Shotgun Shooting	\$15.60	Per Course	Cost of materials
GUR 1007	NRA Basic Shotgun Shooting	\$14.56	Per Course	Cost of materials
GUR 1008	Muzzleloading Pistol Shooting	\$10.00	Per Course	Cost of range fees
GUR 1008	Muzzleloading Pistol Shooting	\$14.56	Per Course	Cost of materials
GUR 1009	Muzzleloading Rifle Shooting	\$10.00	Per Course	Cost of range fees
GUR 1009	Muzzleloading Rifle Shooting	\$14.56	Per Course	Cost of materials
GUR 1010	NRA Basic Rifle Shooting	\$10.00	Per Course	Cost of range fees
GUR 1010	NRA Basic Rifle Shooting	\$15.60	Per Course	Cost of materials
GUR 1011	Muzzleloading Shotgun Shooting	\$15.60	Per Course	Cost of materials
GUR 1011	Muzzleloading Shotgun Shooting	\$19.75	Per Course	Cost of materials
GUR 1012	NRA Personal Protection Course	\$10.00	Per Course	Cost of range fees
GUR 1012	NRA Personal Protection Course	\$23.91	Per Course	Cost of materials

COURSE SPECIFIC FEES (continued)

Course #	Course Name	Fee	Frequency	Explanation
GUR 1020	NRA Range Safety Officer	\$10.00	Per Course	Cost of range fees
GUR 1020	NRA Range Safety Officer	\$24.74	Per Course	Cost of materials
GUR 2000	NRA Basic Instruction Training	\$10.00	Per Course	Cost of range fees
GUR 2000	NRA Basic Instruction Training	\$12.59	Per Course	Cost of materials
GUR 2001	Firearm Safety Instructor	\$10.00	Per Course	Cost of range fees
GUR 2001	Firearm Safety Instructor	\$12.47	Per Course	Cost of materials
GUR 2001	Firearm Safety Instructor	\$14.76	Per Course	Cost of materials
GUR 2006	NRA Pistol Instructor	\$10.00	Per Course	Cost of range fees
GUR 2006	NRA Pistol Instructor	\$16.11	Per Course	Cost of materials
GUR 2006	NRA Pistol Instructor	\$10.39	Per Course	Cost of materials
GUR 2007	NRA Shotgun Shooting Inst	\$15.60	Per Course	Cost of materials
GUR 2007	NRA Shotgun Shooting Inst	\$14.56	Per Course	Cost of materials
GUR 2007	NRA Shotgun Shooting Inst	\$10.39	Per Course	Cost of materials
GUR 2008	NRA Muzzleloading Instructor	\$10.39	Per Course	Cost of materials
GUR 2008	NRA Muzzleloading Instructor	\$14.56	Per Course	Cost of materials
GUR 2008	NRA Muzzleloading Instructor	\$14.56	Per Course	Cost of materials
GUR 2010	Basic Rifle Shooting Instruc	\$10.00	Per Course	Cost of range fees
GUR 2010	Basic Rifle Shooting Instruc	\$15.60	Per Course	Cost of materials
GUR 2010	Basic Rifle Shooting Instruc	\$18.71	Per Course	Cost of materials
GUR 2012	NRA Personal Protection Instr	\$10.00	Per Course	Cost of range fees
GUR 2012	NRA Personal Protection Instr	\$23.91	Per Course	Cost of materials
GUR 2012	NRA Personal Protection Instr	\$20.30	Per Course	Cost of materials
GUR 2020	NRA Chief Range Safety Officer	\$10.00	Per Course	Cost of range fees
GUR 2020	NRA Chief Range Safety Officer	\$24.74	Per Course	Cost of materials
GUR 2020	NRA Chief Range Safety Officer	\$27.02	Per Course	Cost of materials
GUS 1000	Orientation and Firearms safety	\$300.00	Per Course	Technology - student i-pads
GUS 1010	Firearms Bench Metal	\$32.21	Per Course	Cost of materials
GUS 1012	Firearms Machine Shop I	\$172.76	Per Course	Cost of materials
GUS 1027	Firearms Machine Shop II	\$169.74	Per Course	Cost of materials
GUS 2005	Firearms Machine Shop III	\$172.76	Per Course	Cost of materials
HEQ 1040	Heavy Equipment Operations	\$76.50	Per Course	Equipment repairs
HEQ 2020	Motor Grader I	\$76.50	Per Course	Equipment repairs
HEQ 2020	Motor Grader I	\$51.00	Per Course	Fuel and Maintenance
HEQ 2021	Motor Grader II	\$108.93	Per Course	Cost of materials
HEQ 2025	Backhoe I	\$76.50	Per Course	Equipment repairs
HEQ 2025	Backhoe I	\$51.00	Per Course	Fuel and Maintenance
HEQ 2026	Backhoe II	\$108.93	Per Course	Cost of materials
HEQ 2030	Hydraulic Excavator	\$76.50	Per Course	Equipment repairs
HEQ 2030	Hydraulic Excavator	\$51.00	Per Course	Fuel and Maintenance
HEQ 2040	Basic Bulldozer I	\$51.00	Per Course	Fuel and Maintenance
HEQ 2040	Bulldozer I	\$76.50	Per Course	Equipment repairs
HEQ 2042	Skid Steers	\$76.50	Per Course	Equipment repairs
HEQ 2042	Skid Steers	\$51.00	Per Course	Fuel and Maintenance
HEQ 2046	Front End Loader II	\$51.00	Per Course	Fuel and Maintenance
HEQ 2046	Front End Loaders	\$76.50	Per Course	Equipment repairs
HEQ 2050	On-Road Dump Trucks	\$108.93	Per Course	Cost of materials
HLT 1060	Greenhouse Management	\$10.61	Per Course	Course materials
HLT 1101	Introduction to Horticulture	\$10.61	Per Course	Course materials
HLT 2026	Interior Plants	\$10.61	Per Course	Course materials
HWE 1061	Fitness and Wellness	\$5.26	Per Course	Course materials
LEA 1007	Law Enforcement Driving	\$636.47	Per Course	Vehicle Fuel and Maintenance
LEA 1008	Firearms	\$318.24	Per Course	Firearms Range costs - including targets,
MAC 1010	Introduction to Engine Lathe	\$65.43	Per Course	Cost of materials
MAC 1011	Intermediate Engine Lathe	\$65.43	Per Course	Cost of materials
MAC 1020	Intro to Milling Machine	\$65.43	Per Course	Cost of materials
MAC 1020	Intro to Milling Machine	\$65.43	Per Course	Cost of materials
MAC 1021	Intermediate Milling Machine	\$65.43	Per Course	Cost of materials
MAC 1022	Adv Milling Machine Operations	\$65.43	Per Course	Cost of materials
MAN 2026	Principles of Management	\$5.15	Per Course	workbook, course materials and supplies
MAP 1083	Medical Assistant Internship	\$9.00	Per Course	Malpractice Insurance
MAP 1083	Medical Assistant Internship	\$73.48	Per Course	Course materials
MAP 2038	Medical Assisting Laboratory	\$95.63	Per Course	Course materials
MAP 2040	Medical Assist Clinical Skills	\$102.13	Per Course	Course materials
MAP 2069	Review- Medical Asst Natl Exam	\$161.11	Per Course	Course materials
MAP 2069	Review- Medical Asst Natl Exam	\$76.91	Per Course	Cost of supplies
MAT 1240	Math for Liberal Arts: MA1	\$10.39	Per Course	Brainfuse online tutoring platform

COURSE SPECIFIC FEES (continued)

Course #	Course Name	Fee	Frequency	Explanation
MAT 1260	Intro to Statistics: MA1	\$10.39	Per Course	Brainfuse online tutoring platform
MAT 1340	College Algebra : MA1	\$10.39	Per Course	Tutor fee (online platform)
MUS 1041	Private Instruction: (specify)	\$106.01	Per Course	Private instruction fee
MUS 1042	Private Instruction: (specify)	\$106.01	Per Course	Private instruction fee
MUS 1043	Private Instruction: (specify)	\$106.01	Per Course	Private instruction fee
MUS 1044	Private Instruction: (specify)	\$106.01	Per Course	Private instruction fee
NAT 1010	Introduction to Manicures & Pedicure	\$10.71	Per Course	Course materials
NAT 1011	Intermediate Manicures & Pedicures	\$10.71	Per Course	Course materials
NAT 2010	Advanced Manicures & Pedicures	\$10.71	Per Course	Course materials
NAT 2011	Application of Artificial Nails	\$10.71	Per Course	Course materials
NUA 1001	Nurse Aide Health Care Skills	\$9.00	Per Course	Malpractice Insurance
NUA 1001	Nurse Aide Health Care Skills	\$188.70	Per Course	Supplies
NUA 1070	Nurse Aide Clinical Experience	\$37.97	Per Course	Materials
NUR 1006	Med-Surg Nursing Concepts	\$34.58	Per Course	Supplies
NUR 1006	Med-Surg Nursing Concepts	\$35.08	Per Course	Materials
NUR 1006	Med-Surg Nursing Concepts	\$167.76	Per Course	Testing
NUR 1009	Fundamentals of Nursing	\$9.00	Per Course	Malpractice Insurance
NUR 1009	Fundamentals of Nursing	\$163.13	Per Course	Testing
NUR 1009	Fundamentals of Nursing	\$172.85	Per Course	Supplies
NUR 1009	Fundamentals of Nursing	\$265.11	Per Course	Simulation
NUR 1050	Nur Care of Obstetric and Pediatric	\$38.75	Per Course	Clinicals
NUR 1069	Transition into Practical Nrsng	\$250.20	Per Course	Testing
NUR 1089	Transition from LPN to ADN	\$165.00	Per Course	Testing
NUR 2001	IV Therapy for LPN	\$9.00	Per Course	Malpractice Insurance
NUR 2001	IV Therapy for LPN	\$102.00	Per Course	Consumable Supplies
NUR 2006	Adv Concepts of Med/Surg NSG I	\$9.00	Per Course	Malpractice Insurance
NUR 2006	Adv Concepts of Med/Surg NSG I	\$150.71	Per Course	Supplies
NUR 2006	Adv Concepts of Med/Surg NSG I	\$265.11	Per Course	Simulation
NUR 2011	Psychiatric-Mental Health NSG	\$97.09	Per Course	Clinicals
NUR 2016	Adv Concepts Med-Surg NSG II	\$35.08	Per Course	Supplies
NUR 2016	Adv Concepts Med-Surg NSG II	\$167.76	Per Course	Testing
NUR 2016	Adv Concepts Med-Surg NSG II	\$230.36	Per Course	Boards
NUR 2030	Transition to Professional NSG	\$335.64	Per Course	Testing
NUR 3001	Integration of BSN	\$612.00	Per Course	Simulation maintenance and service
NUR 4008	Legal Ethical	\$9.00	Per Course	Malpractice Insurance
OSH 1310	10HR Constructn Industry Strnds	\$25.50	Per Course	digital access
PHY 1111	Physics: Algebra-Based I	\$10.50	Per Course	Course materials
PHY 1112	Physics: Algebra-Based II	\$10.50	Per Course	Course materials
PHY 2111	Physics: Calculus Based I	\$10.50	Per Course	Course materials
PHY 2112	Physics: Calculus Based II	\$10.50	Per Course	Course materials
RAM 2005	Range Management	\$10.24	Per Course	Course materials
THE 1005	Theater Appreciation: GT-AH1	\$18.36	Per Course	Theater experience
THE 1008	Theatre Script Analysis: AH1	\$10.00	Per Course	Theatre Production Costs
THE 1011	Acting I	\$10.00	Per Course	Theatre Production Costs
THE 1016	Technical Theatre	\$10.00	Per Course	Theatre Production Costs
THE 1029	Introduction to the Entertainment Industr	\$10.00	Per Course	Theatre Production Costs
THE 2011	Development of Theatre Greek - Ren	\$10.00	Per Course	Theatre Production Costs
THE 2012	Development of Theatre Restoration	\$10.00	Per Course	Theatre Production Costs
TMC 1001	Intro to Trails	\$51.00	Per Course	Transportation to field site & field work supplies
TMC 1003	Intro to Trail Maintenance	\$51.00	Per Course	Transportation to field site & field work supplies
TMC 1010	Trail Planning I	\$51.00	Per Course	Transportation to field site & field work supplies
TMC 1020	Trail Design I	\$51.00	Per Course	Transportation to field site & field work supplies
TMC 1030	Trail Construction I	\$102.00	Per Course	Transportation to field site & field work supplies
TMC 1032	Train Construction II	\$102.00	Per Course	Transportation to field site & field work supplies
TMC 1050	Trails in Challenging Terrain	\$102.00	Per Course	Transportation to field site & field work supplies
TMC 1060	Trail Ops and Maintenance	\$102.00	Per Course	Transportation to field site & field work supplies
UAS 1050	UAS Foundations	\$80.33	Per Course	Course Materials/Transportation/Maintenance
UAS 1051	UAS Applications	\$10.71	Per Course	Course Materials/Transportation/Maintenance
UAS 1052	UAS Personnel	\$10.71	Per Course	Course Materials/Transportation/Maintenance
UAS 1053	UAS Safety Management	\$10.71	Per Course	Course Materials/Transportation/Maintenance
WEL 1021	Structural Welding I	\$193.32	Per Course	Course materials
WEL 1022	Structural Welding II	\$193.33	Per Course	Course materials
WEL 1024	Intro-Gas Tungsten Arc Welding	\$193.33	Per Course	Course materials
WEL 1025	Intro-Gas Metal Arc Welding	\$193.33	Per Course	Course materials
WEL 1035	Tig Welding for Gunsmiths	\$97.54	Per Course	Course materials
WEL 2003	Flux Cored Arc Welding I	\$193.33	Per Course	Course materials

COURSE SPECIFIC FEES (continued)

Course #	Course Name	Fee	Frequency	Explanation
WEL 2024	Adv Gas Tungsten Arc Welding	\$193.33	Per Course	Course materials
WEL 2030	Pipe Welding I	\$193.33	Per Course	Course materials
WEL 2031	Pipe Welding II	\$193.33	Per Course	Course materials

NOTES:

[illegible]

» PLEASE TURN IN YOUR OFFICIAL HIGH SCHOOL TRANSCRIPT TO QUALIFY FOR TSC AUTOMATIC SCHOLARSHIPS

» President's Scholarship 3.5 – 4.0 GPA

Amount: 6 credit hours paid for on-campus learning, in-state tuition per semester

- Criteria:**
- First time degree/certificate – seeking undergraduate student
 - High School/GED GPA 3.5 – 4.0, or have achieved a 1130 or higher score on the SAT
 - Students must carry 15 credit hours per semester Fall/Spring
 - Maintain a cumulative GPA of 3.5 or higher to sustain the scholarship
 - Colorado students must apply for the College Opportunity Fund (COF)
 - Submit official high school transcript to verify eligibility

Duration: Up to four semesters or 60 credit hours based on academic performance

Deadline: Fall Semester ~ July 1 Spring Semester ~ December 1

» Automatic Merit Scholarship 3.0 – 3.499 GPA

Amount: 3 credit hours paid for on-campus learning, in-state tuition per semester

- Criteria:**
- First time degree/certificate – seeking undergraduate student
 - High School /GED 3.0-3.499, or have achieved a 980-1120 or higher score on the SAT
 - Students must carry 15 credit hours per semester Fall/Spring
 - Maintain a cumulative GPA of 3.0 or higher to sustain the scholarship
 - Colorado students must apply for the College Opportunity Fund (COF)
 - Submit official high school transcript to verify eligibility

Duration: Up to four semesters or 60 credit hours based on academic performance

Deadline: Fall Semester ~ July 1 Spring Semester ~ December 1

» Learn Local Scholarship

Amount: 3 credit hours paid for on-campus learning, in-state tuition per semester

- Criteria:**
- Scholarship available to students who graduated from a high school in the Trinidad/Alamosa service area counties: Alamosa, Conejos, Costilla, Las Animas, Huerfano, Mineral, Rio Grande, and Saguache.
 - Students must carry 15 credit hours per semester Fall/Spring
 - Colorado students must apply for the College Opportunity Fund (COF)
 - Submit official high school transcript to verify eligibility

Duration: Up to four semesters or 60 credit hours based on academic performance

Deadline: Fall Semester ~ July 1 Spring Semester ~ December 1

» Trinidad State Scholarships

For more details or to apply for Trinidad State Automatic Scholarships, contact the TSC Admissions Office at (719) 846-5621 or visit our Scholarship web page at trinidadstate.edu/scholarships

» Finish Line Scholarship

Amount: 3 credit hours paid for on-campus learning, in-state tuition

- Criteria:**
- Scholarship available to students who have earned 45 credit hours and in the final semester at Trinidad State
 - Students must carry 15 credit hours for the final semester
 - Colorado students must apply for the College Opportunity Fund (COF)
 - Students must submit a graduation application and demonstrate they are in their last semester of coursework.

Duration: Last semester at Trinidad State College

» 60+ Foundation Scholarships!

More than 60 scholarships are available through the Trinidad State College Foundation. Scholarships are available for new and/or continuing students who demonstrate academic promise in a particular field of study or skill.

Priority Deadline: First Friday of March.

For more information regarding Foundation Scholarships, call (719) 846-5520.